



**SkillsUSA California
Introductory Woodworking
2015 Regional Contest**

Description: The Introduction to Woodworking contest is a state contest only. It is open to all first year secondary construction or woodworking students. Contestants will build a beginning woodworking level project that may require the use of stationary power tools such as the table saw or power miter box under the contest coordinator's supervision. The project may also include the use of portable power tools such as a portable electric drill and a jig saw. Hand tools will also be required to complete the project. Contestants are required to bring the tools listed to the contest. All materials and stationary tools will be provided for.

A measured drawing, tool list, scoring sheet and sample written test has been provided for your convenience. A written test will be administered and will make up 10% of the total score.

Process #1 (Written Test): Contestants will complete a written (safety and math) test and a ruler test.

Process #2 (magazine holder construction): You will be constructing a magazine holder from $\frac{3}{4}$ " x 3- $\frac{1}{2}$ " x 32" # 2 Pine and $\frac{1}{4}$ " x 10" x 11- $\frac{1}{2}$ " plywood. The material for the body will be ripped to width for you, but will need to be cut to length using a power miter saw that has been provided for you to use or your Backsaw and Miter Box. The $\frac{1}{4}$ " side panels will be cut to exact size for you, but must be shaped using your Coping Saw or the jig saw provided for your use. Please glue and nail the side panels to the body, using 20 1" finish nails. The frame is glued and nailed together with four 1 $\frac{1}{2}$ " finish nails. Set the nails and patch over the nail holes. Sand all the surfaces smooth and remove all sharp edges.

Contest Limit (suggested): 12 students

Contest Requirements

1. Tools Required or Recommended for Contest (provided by Organizers)
 - a. Table saw, combo blade (used only for ripping and cross-cutting by organizers)
 - b. Power miter saw, extra blades (used only for solid stock pre-cutting by organizers)
 - c. Jigsaws (optional - for students) (minimum 1 per 2 students)
 - d. Scissors -3-4 pair for students to cut curve template
 - e. First aid kit
 - f. Recommended:
 - i. "Crow's foot" stand for use with coping saw (minimum 1 per 2 students) – please contact adria@awfs.org if you would like these sent to you
 - ii. Verification gauges for judges to use for checking projects (based on curve template; a mirror image of the profile). Use $\frac{1}{4}$ " hardboard material or similar.

2. Materials Required for Contest (provided by Organizers, based on 14 contestants)
 - a. ¼" Birch Plywood, 4' x 8' sheet – 1 sheet (yield: 32 pcs per sheet)
 - b. #2 Common Pine, 1" x 12" x 16' – 1 board (yield: 15 pcs per board)
 - c. 1" finish nails (20 per student)
 - d. 1½" finish nails (4 per student)
 - e. Wood glue two pint bottles (shared)
 - f. Wood Filler Natural Color (DAP Plastic Wood or similar) two 4 oz. cans (shared)
3. Facility Requirements for Contest (provided by Organizers; based on 12 contestants)
 - a. Workbenches/tables
 - b. chairs
4. Est. Cost of Tools, Materials & Supplies (per contestant; based on all tools on donation or loan; provided by Organizers)
 - a. Material cost approx. \$9.50 each
 - b. Supply cost approx. \$2.00 each

TOTAL: \$11.50 per contestant
5. Suggested: seek donations of prizes and "goodie bag" items for winners and contestants:
 - a. Prizes:
 - i. Tool prizes
 - ii. Cash prize or store credit/gift certificate
 - iii. Cover cost of state registration for winner (approx. \$150)
 - b. Goodie bag items:
 - i. Safety glasses
 - ii. Tape measures
 - iii. Dust masks
 - iv. Pens/pencils/notepads
 - v. Training materials (magazines, CDs, books)
 - vi. Other tools of the trade
6. **Regional dress code:**
 - a. Clean black or white solid t-shirt (no school logos, names or any identifying marks)
 - b. Khaki work pants (preferred) or clean jeans, shorts not permitted
 - c. Black or brown belt
 - d. Black or brown leather work shoes (preferred)
 - e. Safety glasses with side shields or goggles; wrap-around safety glasses are ok.
(Prescription glasses can be used only if they are equipped with side shields. If not, they must be covered with goggles.)
 - f. Earplugs
 - g. Hats are OK; all logos must be taped or covered
 - h. No loose clothing, ties or jewelry. Hair must be tied back.

7. Student Tool List

Ensure that all cutting tools are properly sharpened.

REQUIRED

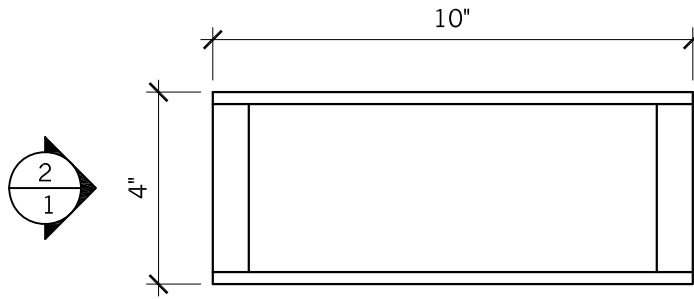
- a. Safety glasses
- b. Claw hammer
- c. Measuring tape
- d. Square or tri-square
- e. 2 pencils
- f. 1/16" nail set
- g. Backsaw or Dovetail Saw
- h. Miter box
- i. Coping saw with extra blades
- j. C-clamps (6") 2 ea. minimum
- k. sanding block
- l. compass or divider
- m. 3 pieces of sandpaper (80, 120 & 220 grit) (minimum)
- n. 1" Putty Knife

RECOMMENDED

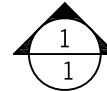
- o. Block Plane (low angle suggested)
- p. 10" half round bastard file w/handle
- q. Calculator
- r. scissors
- s. 180 grit Sandpaper

OPTIONAL

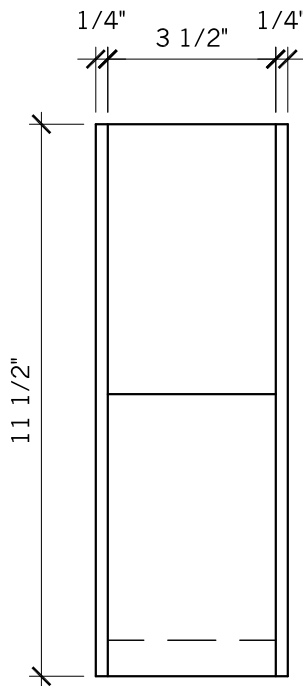
- t. nail apron
- u. Utility Knife
- v. 1 set of wood chisels ¼" – 1"
- w. any drill with 1/16" drill bits
- x. 1/32", 3/32" nail sets
- y. cabinet scraper



PLAN



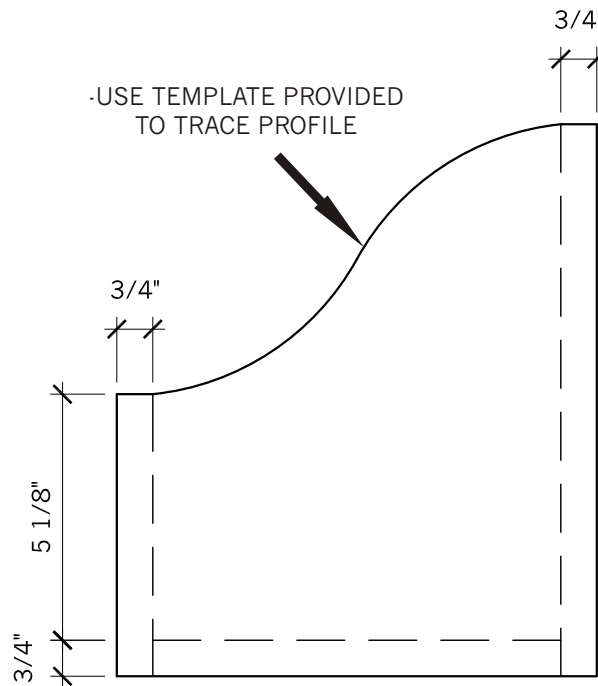
SCALE: 3"=1'-0"



2

ELEVATION

SCALE: 3"=1'-0"



1

ELEVATION

SCALE: 3"=1'-0"

· YOU WILL RECEIVE TWO PIECES OF
1/4" X 10" X 11 1/2" PLYWOOD AND
ONE PIECE OF 3/4" X 3 1/2" X 32" #2 PINE

· YOU CAN USE 20 · 1" FINISH NAILS FOR
ASSEMBLY OF SIDES TO FRONT, BACK & BOTTOM

· YOU CAN USE FOUR · 1 1/2" FINISH NAILS FOR
ASSEMBLY OF FRONT, BACK TO BOTTOM

DIMENSION TOLERANCE: 1/32"±

8/30/13

INTRO TO WOOD

MAGAZINE HOLDER TEMPLATE

KEEP FLUSH
TO EDGE OF
PLYWOOD

10"

- PRINT OUT TEMPLATE AND CUT ALONG THE DASHED LINE

DIMENSION TOLERANCE: $1/32'' \pm$

KEEP FLUSH
TO EDGE OF
PLYWOOD