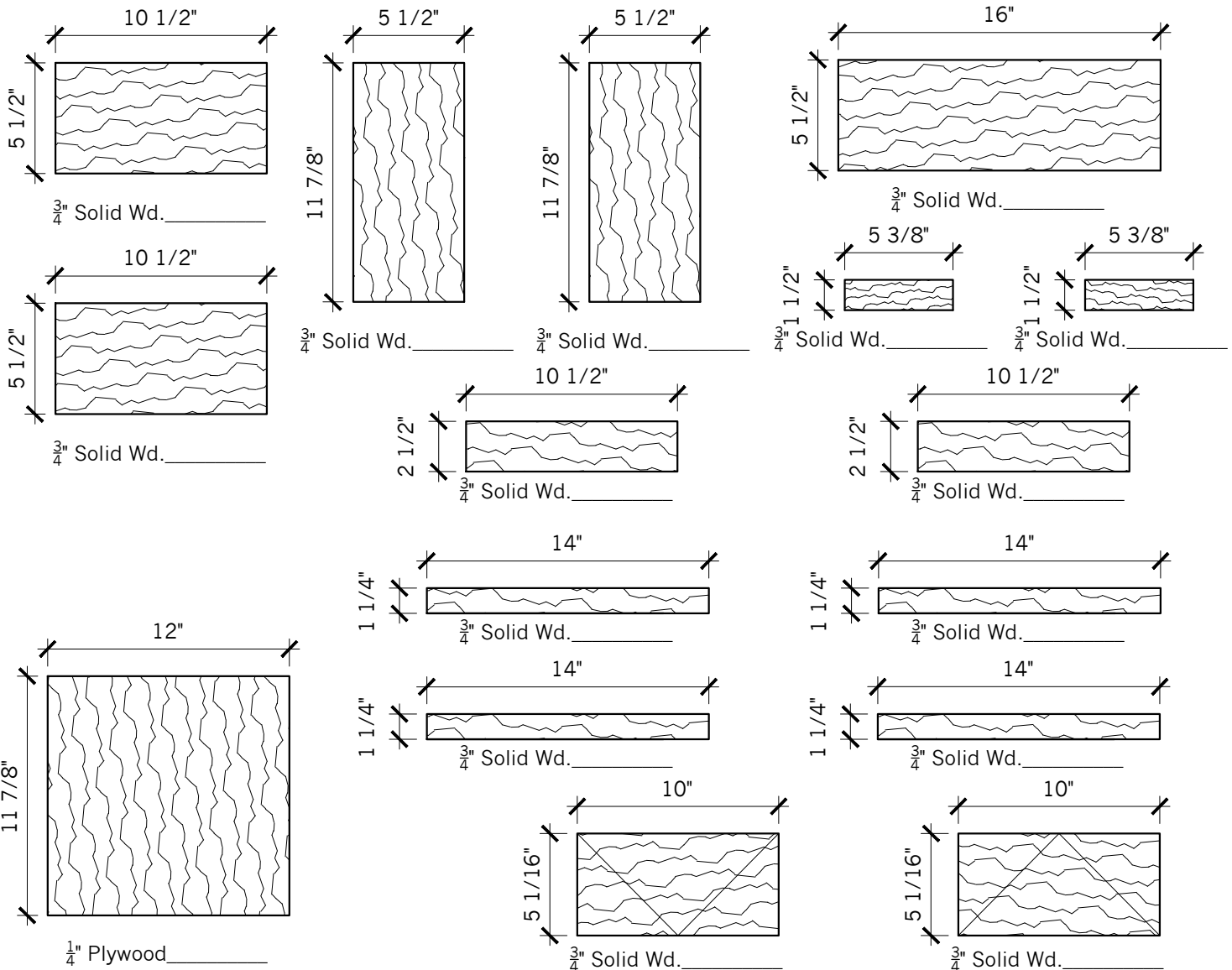


GENERAL INSTRUCTIONS

CONTESTANT # _____

- 1.) Procure material listed in contest guidelines.
- 2.) Cut parts listed below from the solid and plywood stock. 1 part each!
- 3.) Use open cell to identify your parts (i.e. #1, #2, #3, "A", "B", "C", etc.)
- 4.) Have your cut solid stock and hardware ready for live contest.

ALL DIMENSIONS HAVE A $\frac{1}{32}$ " \pm TOLERANCE



2/8/2024



CABINETMAKING
CALIFORNIA REGIONAL
PROJECT PREPARATION

DATE: 2024 JOB #: CM
 DRAWN BY: sm/es SCALE: 3"=1'-0"
 DWG. NO.

PARTS

5 OF 5

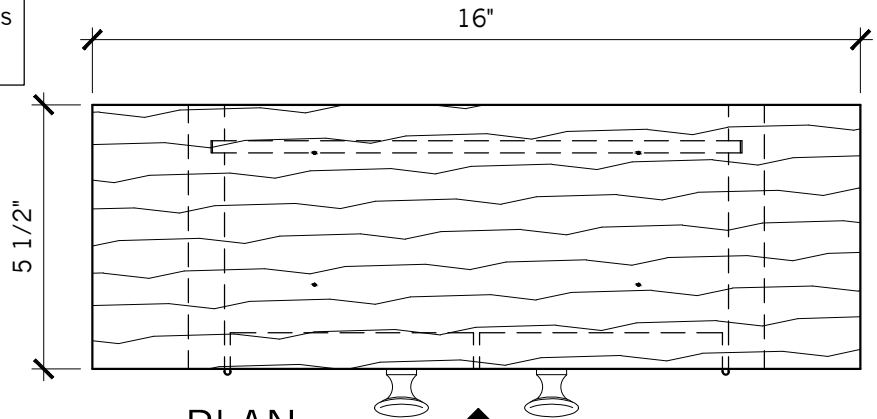
GENERAL INSTRUCTIONS

- 1.) Cut & assemble case with glue and 1 1/2" screws
- 2.) Pre-drill holes, surface mount hinges and knobs
- 3.) After assembly ease all sharp edges and corners

ALL DIMENSIONS HAVE A 1/32" ± TOLERANCE

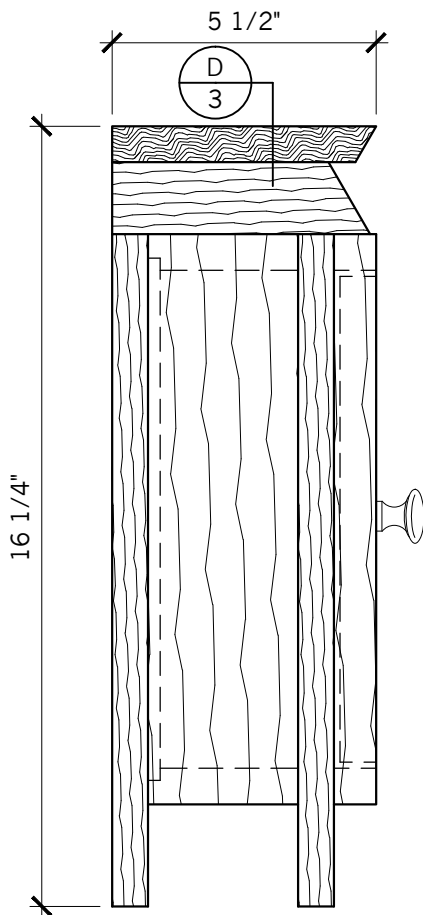
PLEASE SEE SHEET 3
FOR ISOMETRIC VIEW

CONTESTANT #

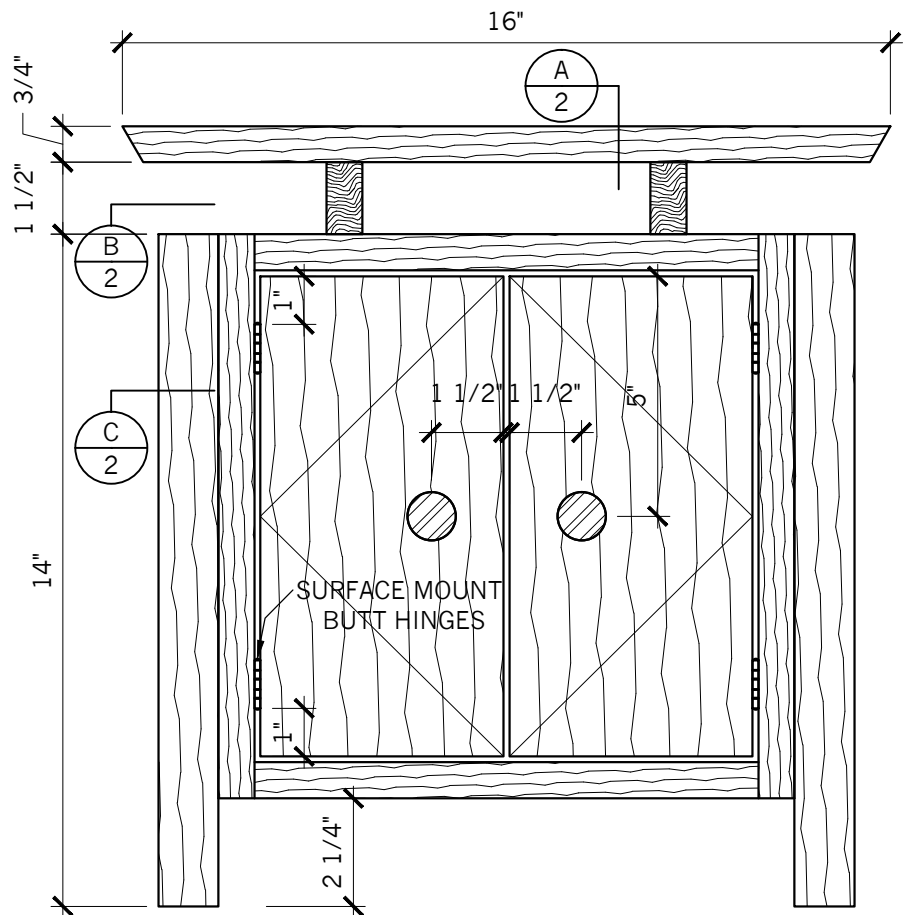


PLAN

SCALE: 3"=1'-0"



2 ELEVATION
SCALE: 3"=1'-0"



1 ELEVATION
SCALE: 3"=1'-0"

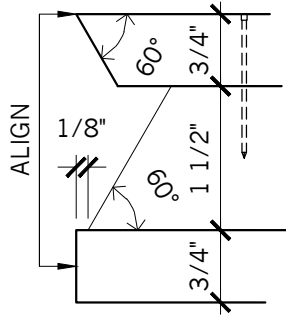
12/19/2023



CABINETMAKING
2 DOOR STANDING CAB.
CALIFORNIA REGIONAL

DATE:	2024	JOB #:	CM
DRAWN BY:	sm/es	SCALE:	3"=1'-0"
DWG. NO.	1		

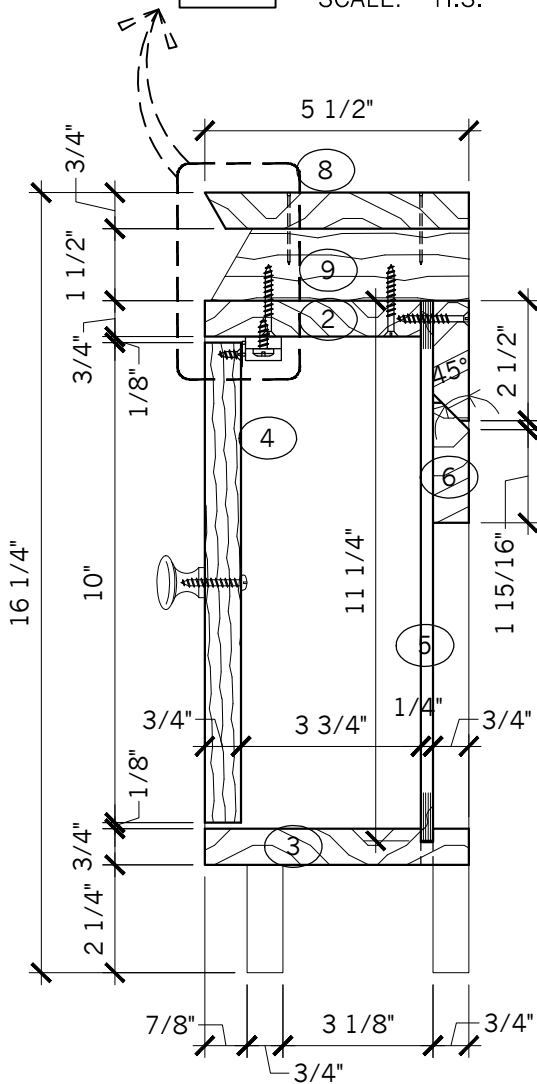
CONTESTANT #



1

DETAIL

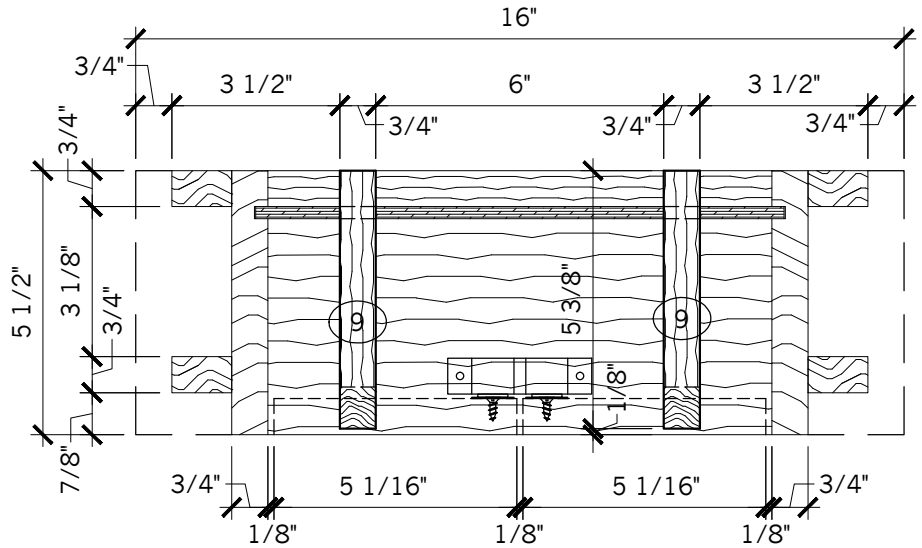
SCALE: H.S.



A

VERT SECTION

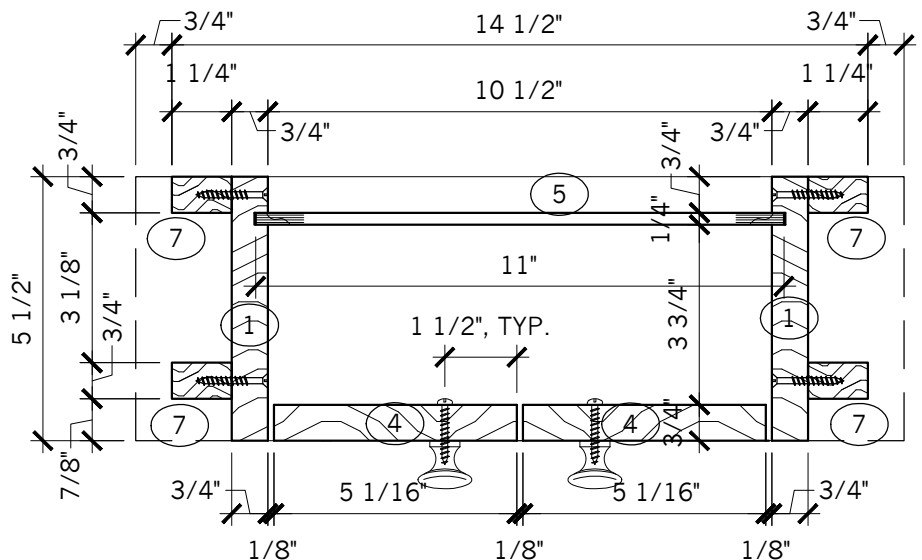
SCALE: 3"=1'-0"



B

PLAN SECTION

SCALE: 3"=1'-0"



C

PLAN SECTION

SCALE: 3"=1'-0"



CABINETMAKING

**VERTICAL SECTIONS
CALIFORNIA REGIONAL**

DATE: 2024

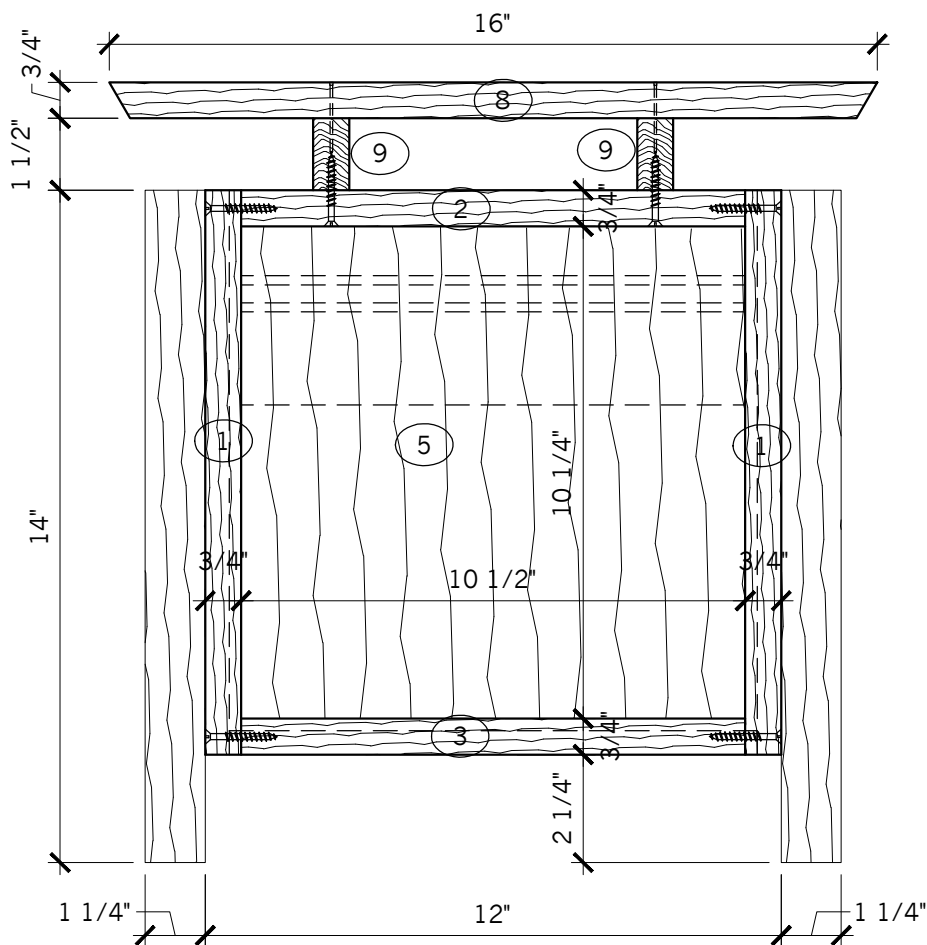
DRAWN BY: sm/es

DWG. NO.

JOB #: CM

SCALE: 3"=1'-0"

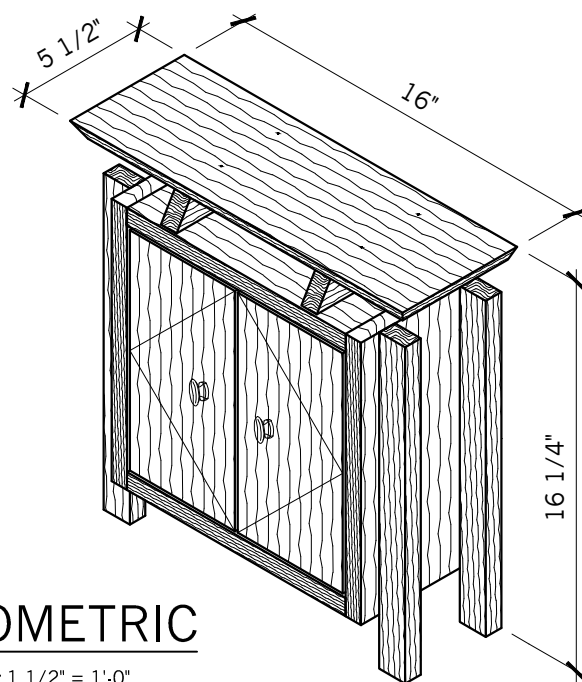
2



CONTESTANT #

D LONGIT SECTION

SCALE: 3"=1'-0"



ISOMETRIC

SCALE: 1 1/2" = 1'-0"

12/19/2023



CABINETMAKING
LONGITUTINAL SECTION
CALIFORNIA REGIONAL

DATE: 2024

JOB #: CM

DRAWN BY: sm/es

SCALE: 3"=1'-0"

DWG. NO.

3

3 OF 5

BILL OF MATERIALS

#	QTY	DESCRIPTION	MATERIAL	THICKNESS	WIDTH	LENGTH	NOTES
1		Case End	Solid Stock	$\frac{3}{4}"$	$5 \frac{1}{2}"$		
2	1	Case Top	Solid Stock	$\frac{3}{4}"$	$4 \frac{1}{2}"$		
3	1	Case Bottom	Solid Stock	$\frac{3}{4}"$	$5 \frac{1}{2}"$		Groove for back
4	2	Door	Solid Stock	$\frac{3}{4}"$			Drill hole for knob
5		Back	Sheet Stock	$\frac{1}{4}"$		$11 \frac{1}{4}"$	
6		Hook Cleat	Solid Stock	$\frac{3}{4}"$	$2 \frac{1}{2}"$		Miter one long (pair-set)
7	4	Leg	Solid Stock	$\frac{3}{4}"$	$1 \frac{1}{4}"$		
8	1	Top	Solid Stock	$\frac{3}{4}"$		16"	Bevel end and front edges
9		Top Spacer	Solid Stock	$\frac{3}{4}"$	$1 \frac{1}{2}"$		Miter one end
10	1	Mag. Catch	Richelieu	$\frac{1}{2}"$	$\frac{3}{4}"$	3"	LOWE'S Item #1175606 Model #BP659190U
11	4	Butt Hinges	Gatehouse	$\frac{1}{8}"$	1"	2"	LOWE'S Item #352943 Model #S841-552
12	2	Cabinet Knob	Brainerd Rowland	N/A	$1 \frac{1}{4}"$	N/A	LOWE'S Item #362799 Model #P10512V-BIR-C7

NOTE: MAY USE EQUIVALENT HARDWARE
NO POINT DEDUCTION ON HARDWARE

NOTES:

BILL OF MATERIAL INSTRUCTIONS

In this phase of the competition you will have to look at Sheets 1, 2 & 3.
 You will have to calculate some dimensions while others are given.
 This portion of the competition is worth 85 of 1000 points.

ALL DIMENSIONS HAVE A $\pm \frac{1}{32}"$ TOLERANCE

12/19/2023

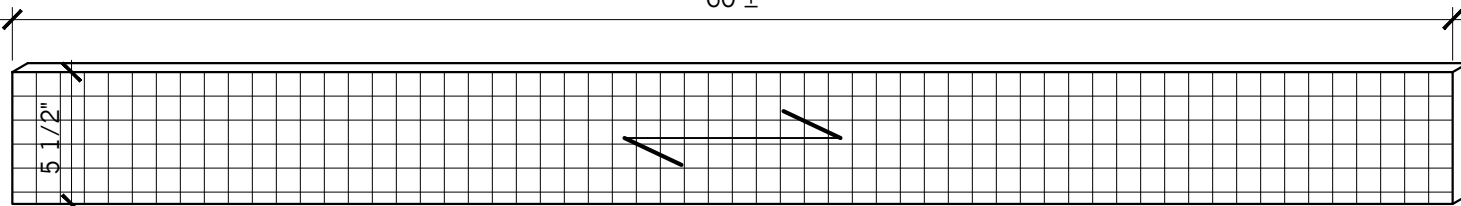


CABINETMAKING
BILL OF MATERIALS
CALIFORNIA REGIONAL

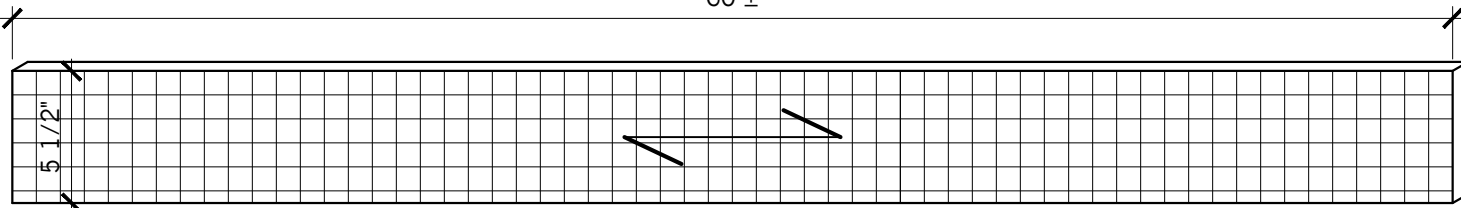
DATE: 2024	JOB #: CM
DRAWN BY: sm/es	SCALE: NTS
DWG. NO. 4	

CONTESTANT #

60"±

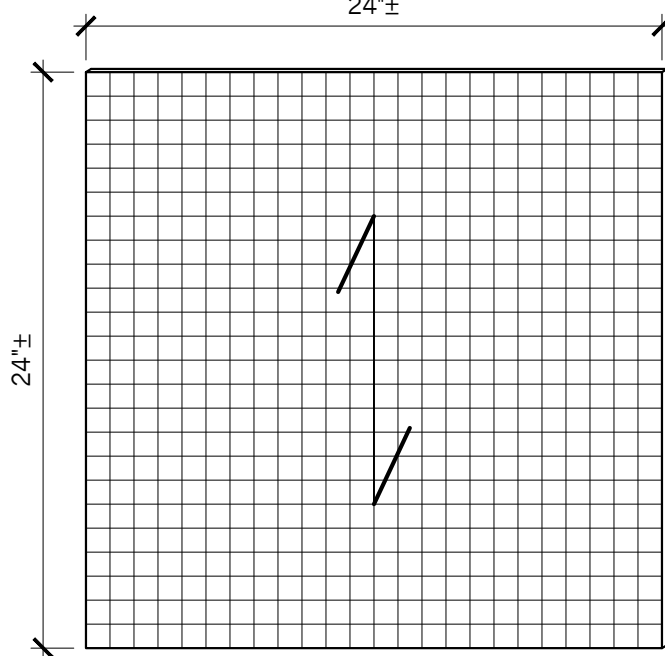


60"±



YOU WILL RECEIVE ONE PIECE OF SOLID STOCK
1 @ $\frac{3}{4}$ " x $5\frac{1}{2}$ "± x 120"± (CUT IN HALF)

24"±



24"±

YOU WILL RECEIVE ONE PIECE OF SHEET STOCK
1 @ $\frac{1}{4}$ " x 24"± x 24"±

MATERIAL LAYOUT INSTRUCTIONS

Once you've completed your Bill of Materials, lay out your parts on the corresponding material by drawing a line vertically and/or horizontally to represent the part. Hint: Label your part with Item #, Description or Size; sketch any details the part may have.

This portion of the competition is worth 150 of 1000 points.

Note: Each square is scaled to 1" Squared.

12/19/2023



CABINETMAKING

**MATERIAL LAYOUT
CALIFORNIA REGIONAL**

DATE:	2024	JOB #:	CM
DRAWN BY:	smes	SCALE:	3"=1'-0"
DWG. NO.	5		