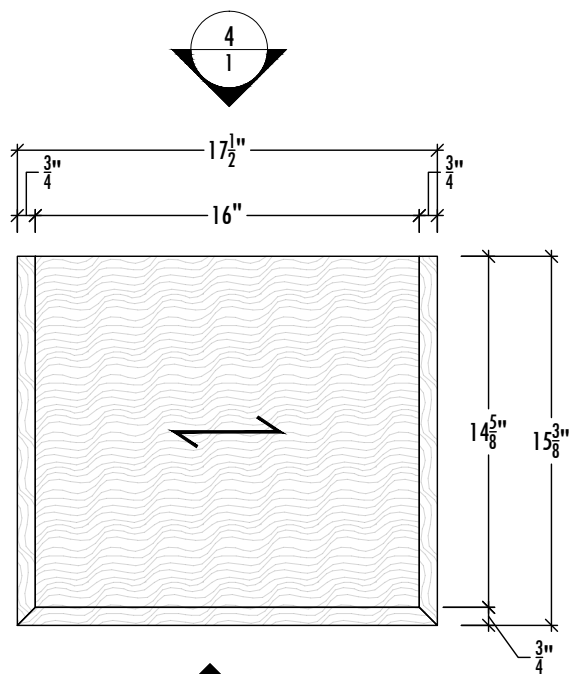


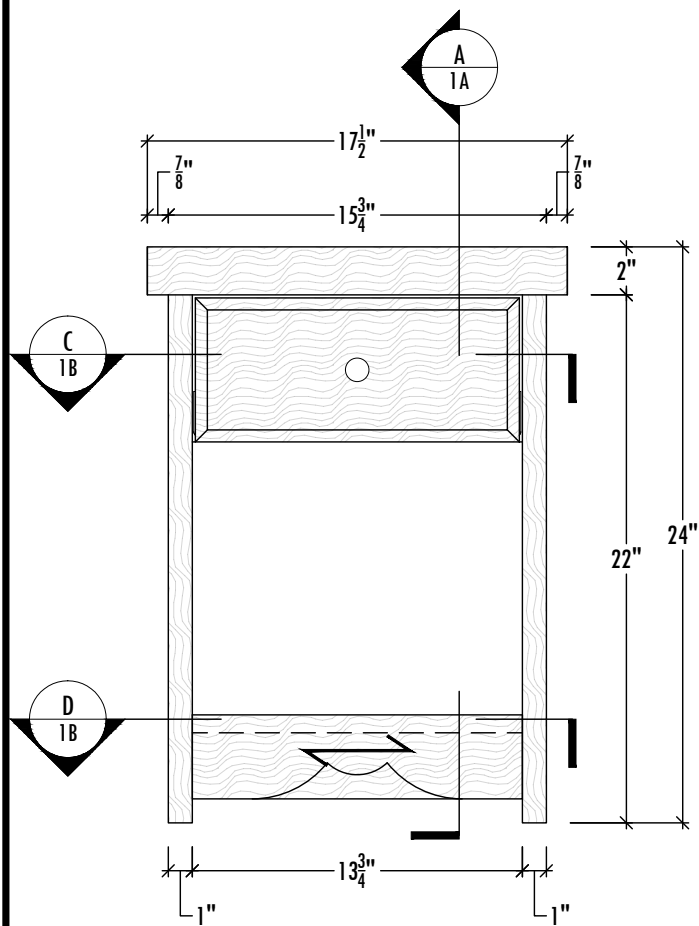
SkillsUSA

CALIFORNIA

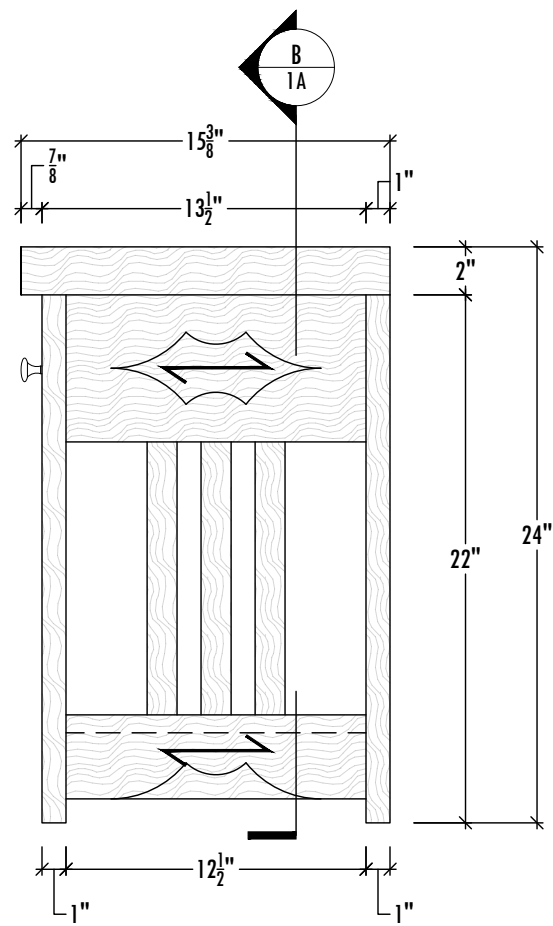
STATE CONTEST



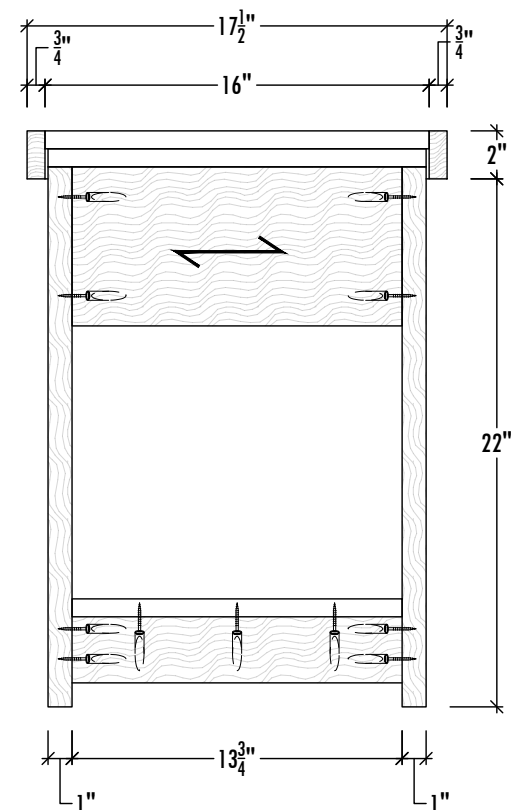
1 PLAN VIEW
SCALE: 1 1/2" = 1'-0"



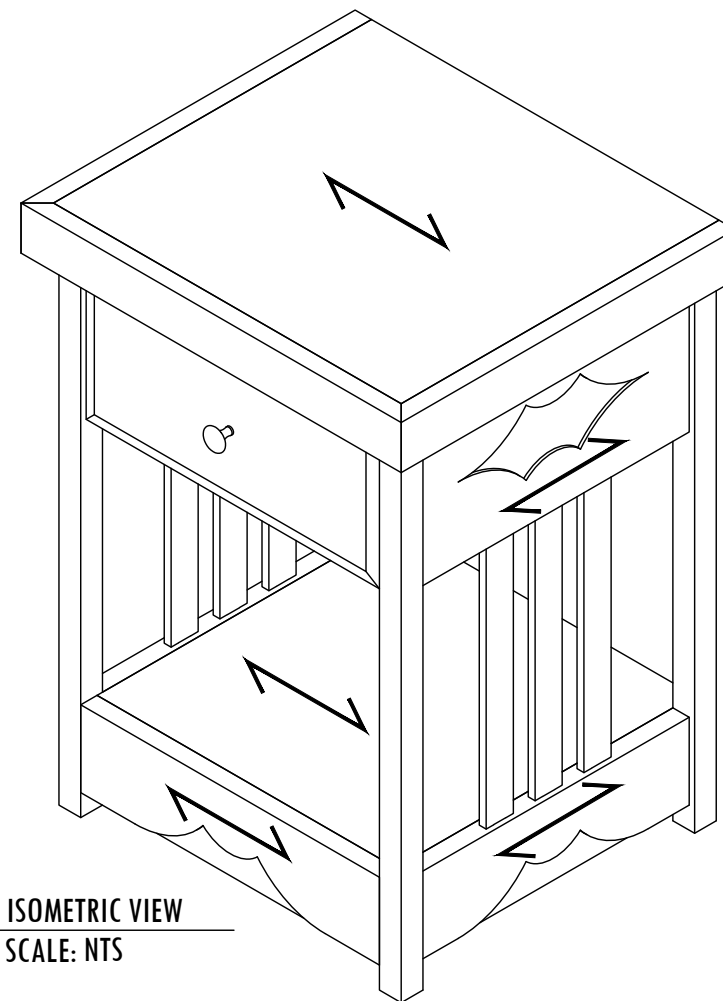
2 ELEVATION
SCALE: 1 1/2" = 1'-0"



3 ELEVATION
SCALE: 1 1/2" = 1'-0"



4 ELEVATION
SCALE: 1 1/2" = 1'-0"



ISOMETRIC VIEW
SCALE: NTS

CONTESTANT #

SkillsUSA

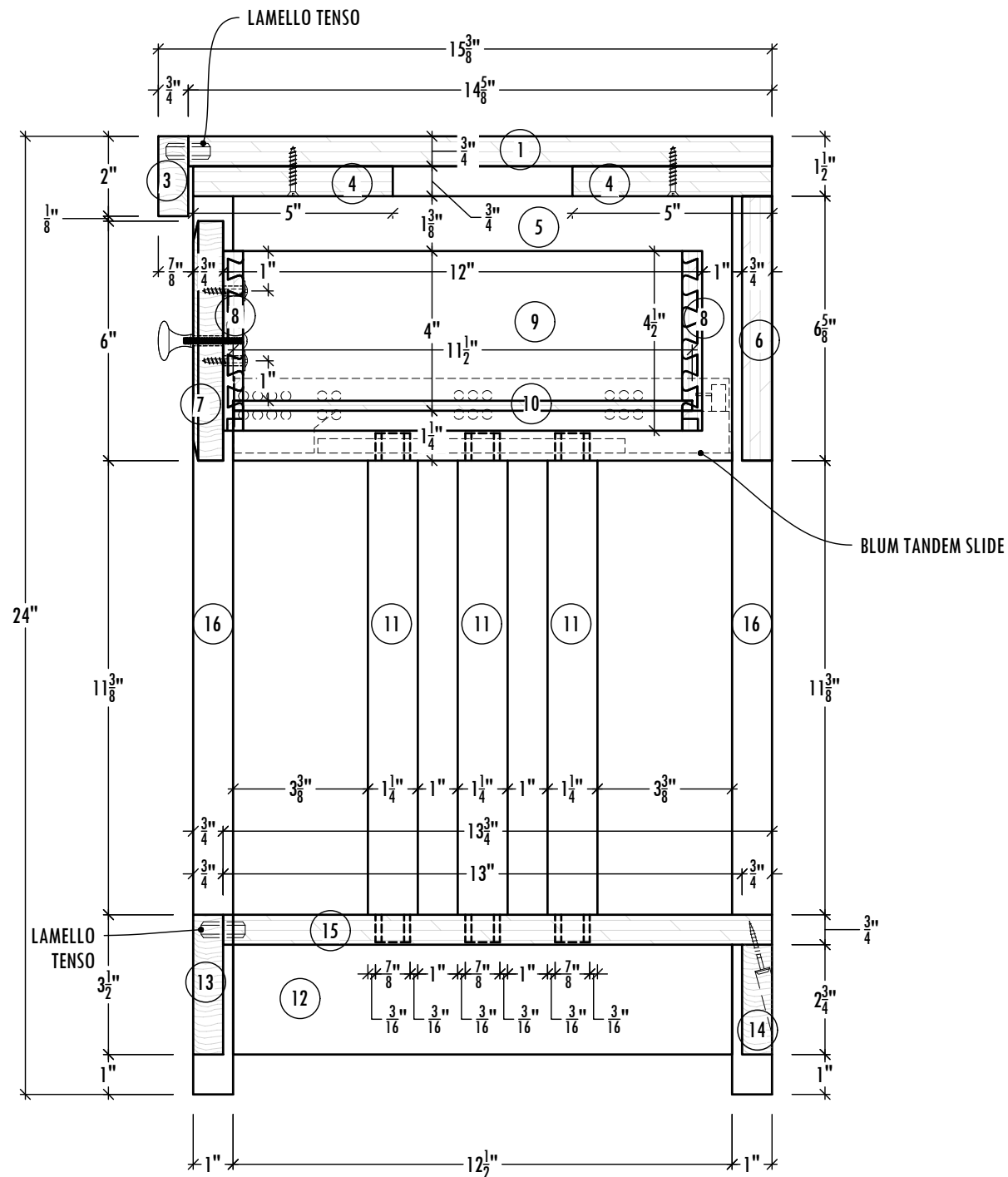
CALIFORNIA

STATE CONTEST

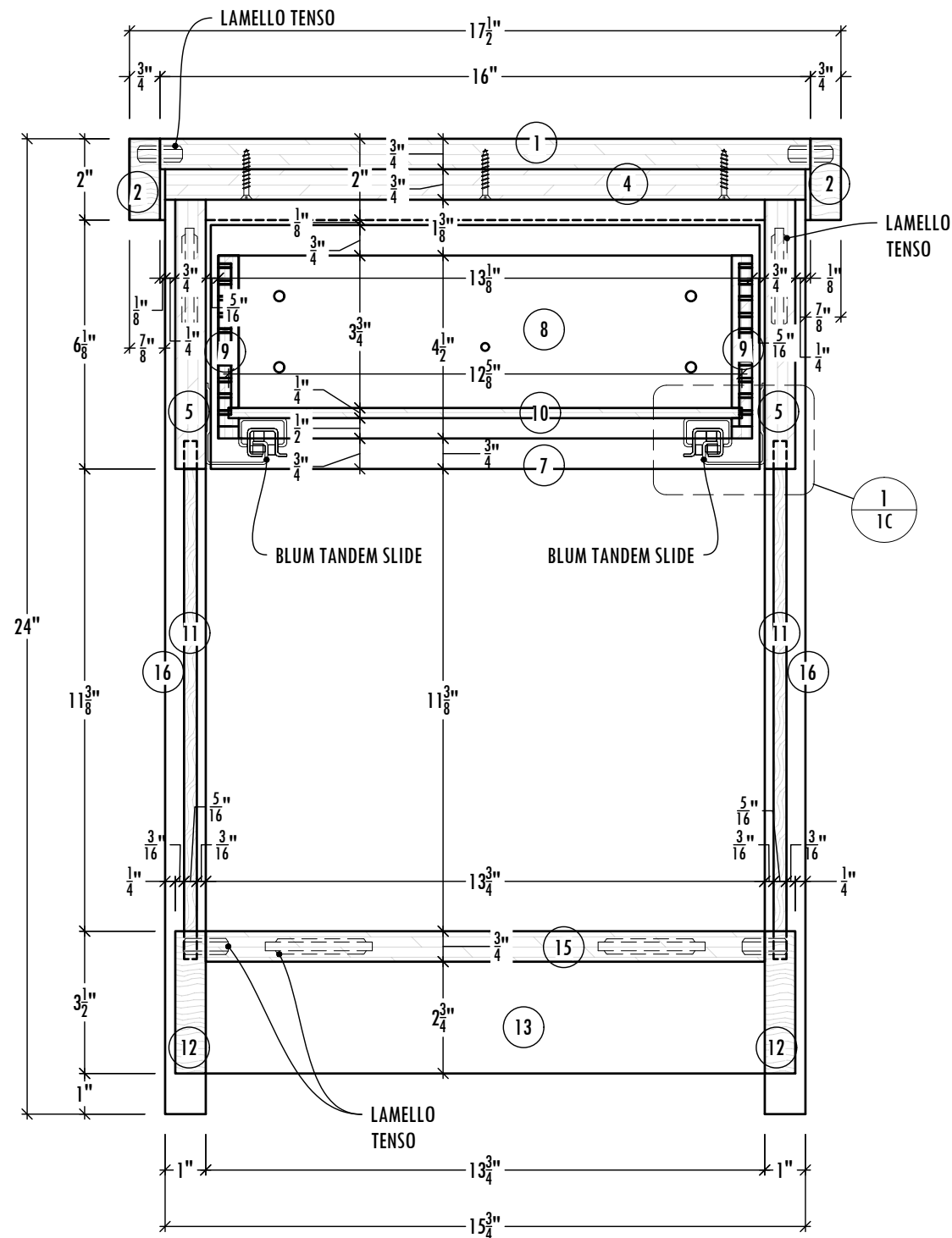
ITEM: WOOD END TABLE	
DATE: APRIL	2024
SCALE: AS SHOWN	DWG #: 1
DRAWN BY: DW	

SPECIAL SPONSORS:

Duckworks
Millwork Solutions



A VERT SECTION
SCALE: 3" = 1'-0"



B LONGIT SECTION
SCALE: 3" = 1'-0"

CONTESTANT #

SkillsUSA

CALIFORNIA

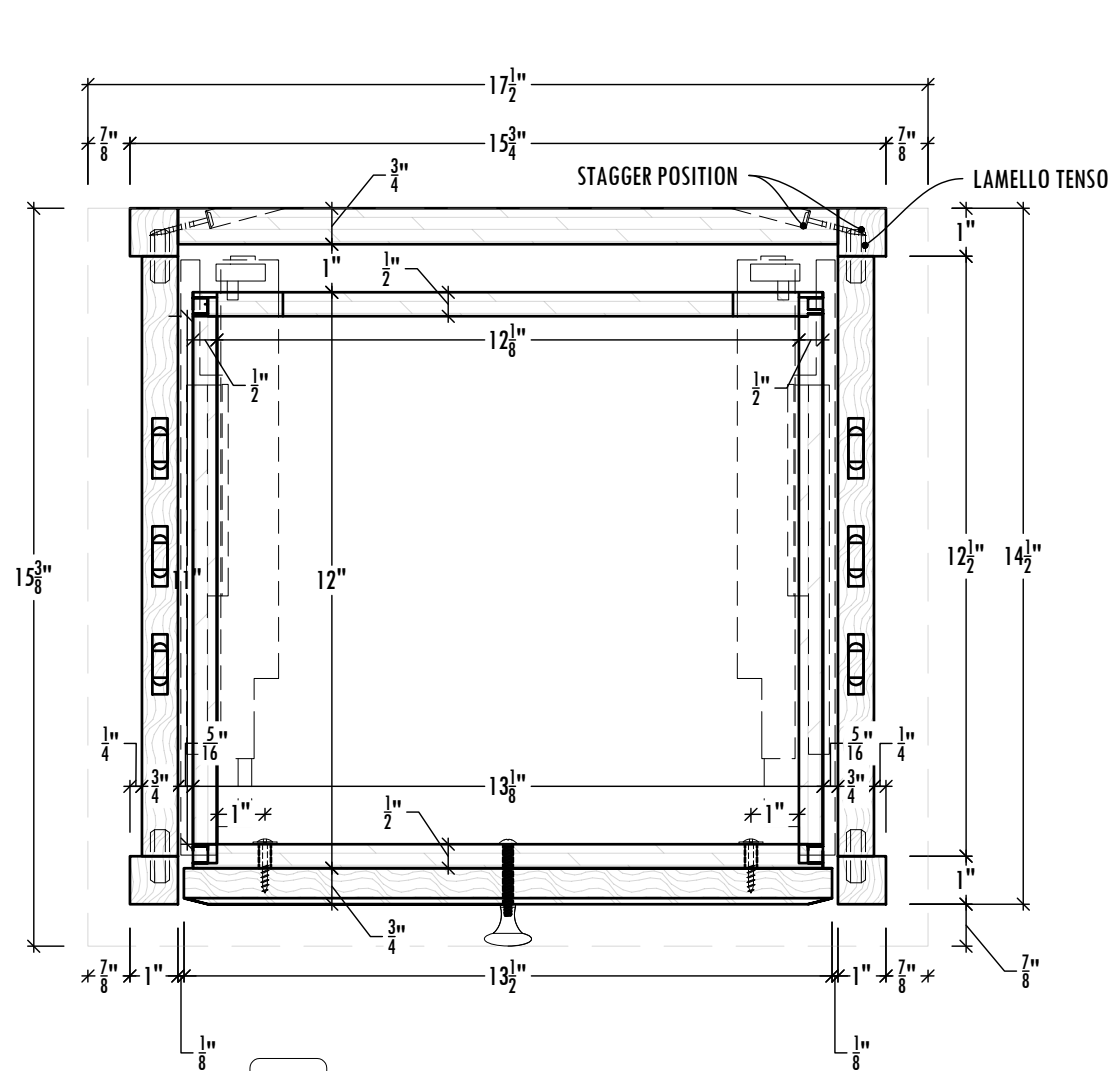
STATE CONTEST

ITEM: WOOD END TABLE	
DATE: APRIL	COMPETITION DATE: 2024
SCALE: 3" = 1'-0"	DWG #: 1A
DRAWN BY: DW	

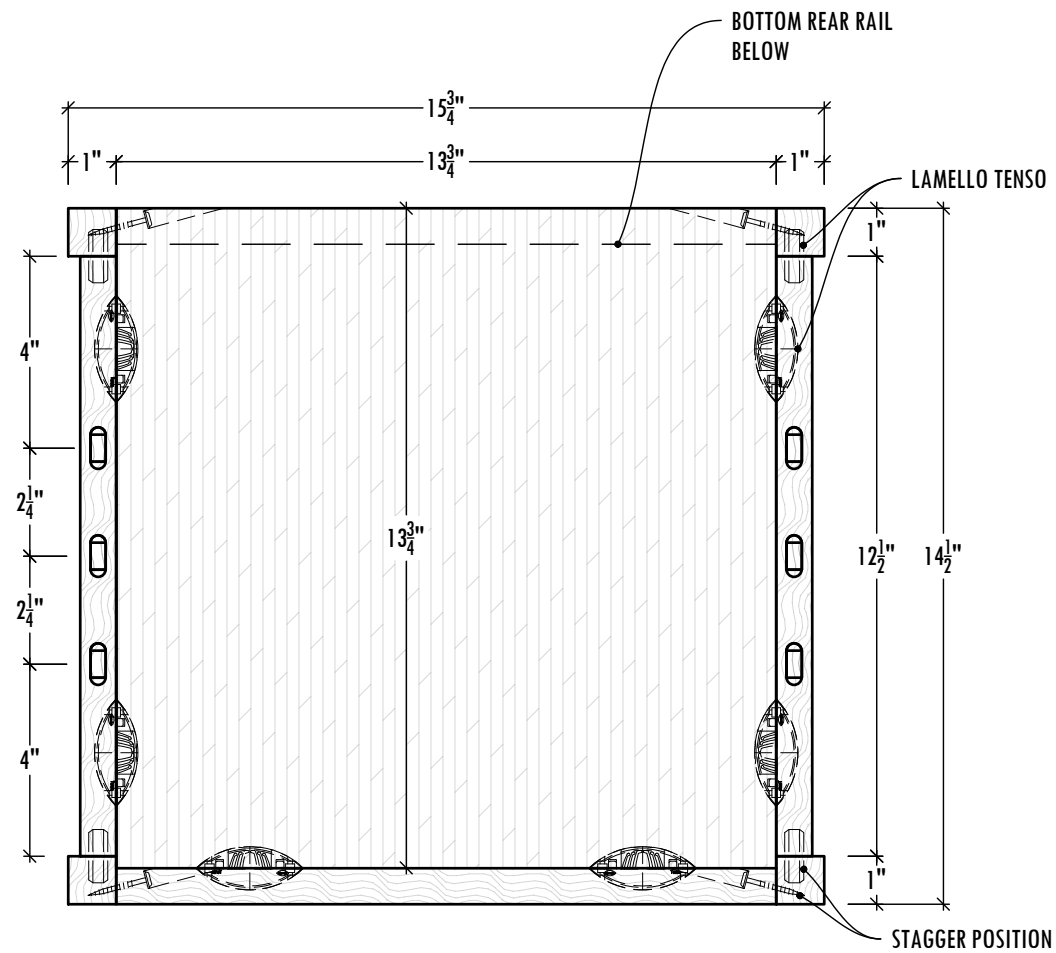
SPECIAL SPONSORS:

Duckworks

Millwork Solutions



C PLAN SECTION
SCALE: 3" = 1'-0"



D PLAN SECTION
SCALE: 3" = 1'-0"

CONTESTANT #

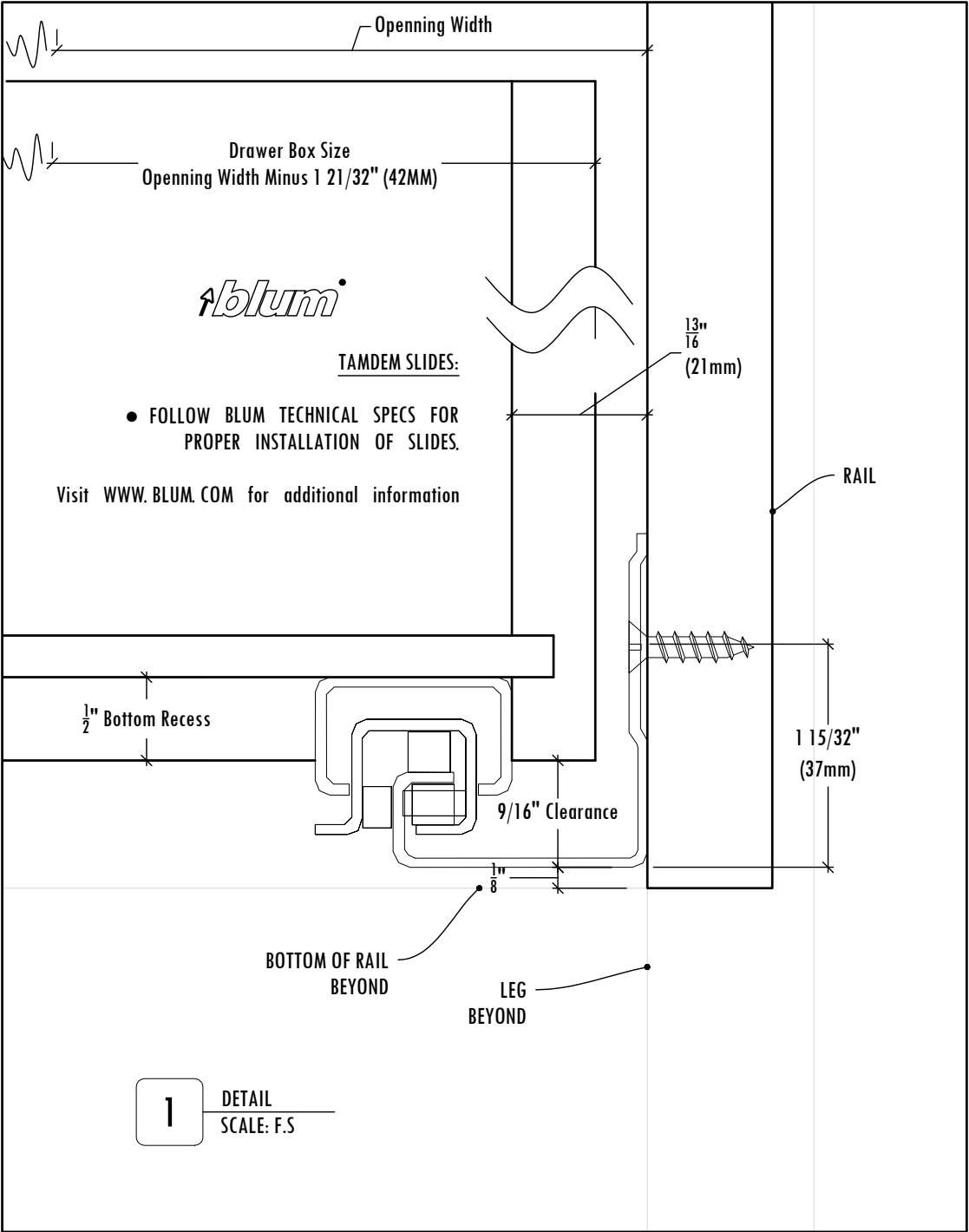
SkillsUSA

CALIFORNIA STATE CONTEST

ITEM: WOOD END TABLE	
DATE: APRIL	COMPETITION DATE: 2024
SCALE: 3" = 1'-0"	DWG #: 1B
DRAWN BY: DW	

SPECIAL SPONSORS:

Duckworks
Millwork Solutions



CONTESTANT #

SkillsUSA
CALIFORNIA
STATE CONTEST

ITEM: WOOD END TABLE	
DATE: APRIL	COMPETITION DATE: 2024
SCALE: F.S	DWG #: 1C
DRAWN BY: DW	

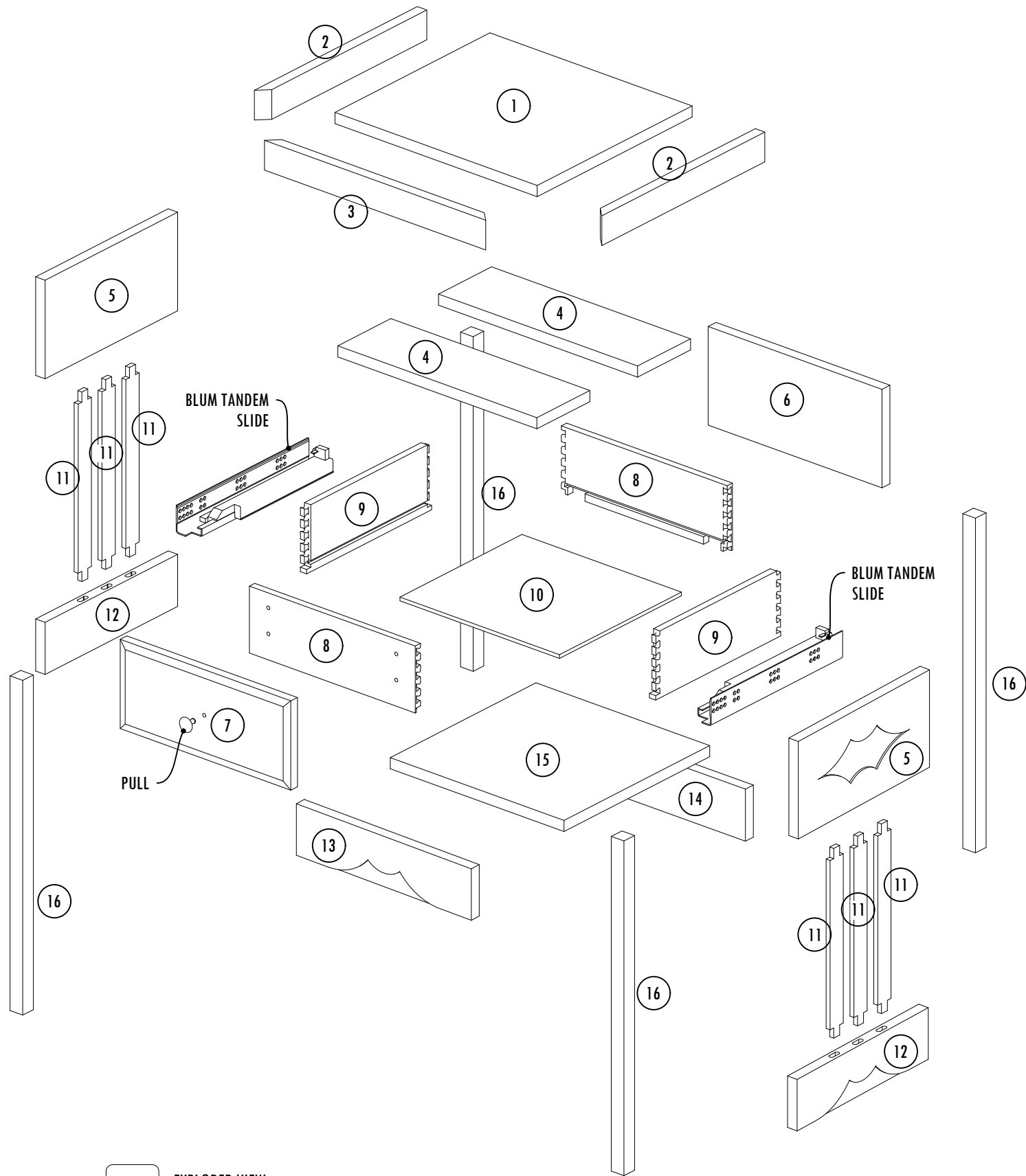
SPECIAL SPONSORS:

Duckworks
Millwork Solutions



CONTESTANT #

<h1 style="margin: 0;">SkillsUSA</h1> <h2 style="margin: 0;">CALIFORNIA STATE CONTEST</h2>	
ITEM: WOOD END TABLE	
DATE: APRIL	COMPETITION DATE: 2024
SCALE: AS SHOWN	DWG #: 1D
DRAWN BY: DW	
SPECIAL SPONSORS: <div style="text-align: center; margin-top: 20px;">  <p style="margin-top: 10px;">Millwork Solutions</p> </div>	



EXPLODED PARTS	
#	DESCRIPTION
1	TOP
2	SIDE SELF EDGES
3	FRONT SELF EDGE
4	STRETCHERS
5	TOP SIDE RAILS
6	TOP REAR RAIL
7	DRAWER FRONT
8	DRAWER FRONT&BACK
9	DRAWER SIDES
10	DRAWER BOTTOM
11	VERTICAL SLATS
12	BOTTOM SIDE RAILS
13	BOTTOM FRONT RAIL
14	BOTTOM REAR RAIL
15	DECK
16	LEGS

CONTESTANT #

SkillsUSA
CALIFORNIA
STATE CONTEST

ITEM: WOOD END TABLE	
DATE: APRIL	COMPETITION DATE: 2024
SCALE: AS SHOWN	DWG #: EXPLODED
DRAWN BY: DW	

SPECIAL SPONSORS:

Duckworks
Millwork Solutions

NOTES:

BILL OF MATERIALS							
#	QTY	DESCRIPTION	MATERIAL	THICKNESS	WIDTH	LENGTH	NOTES
1	1	TOP	RED OAK PLY	$\frac{3}{4}$ "			
2		SIDE SELF EDGES	SOLID RED OAK	$\frac{3}{4}$ "	2"		MITER 1 END
3	1	FRONT SELF EDGE	SOLID RED OAK	$\frac{3}{4}$ "	2"		MITER 2 ENDS
4		STRETCHERS	RED OAK PLY	$\frac{3}{4}$ "			
5		TOP SIDE RAILS	RED OAK PLY	$\frac{3}{4}$ "			EDGE 1 LONG
6	1	TOP REAR RAIL	RED OAK PLY	$\frac{3}{4}$ "	$6\frac{5}{8}$ "		
7	1	DRAWER FRONT	SOLID RED OAK	$\frac{3}{4}$ "			FROM DECORE-ATIVE SPECIALTIES
8	2	DRAWER FRONT&BACK	BALTIC BIRCH PLY	$\frac{1}{2}$ "	$4\frac{1}{2}$ "	$13\frac{1}{8}$ "	KIT FROM DRAWER BOX SPECIALITIES
9	2	DRAWER SIDES	BALTIC BIRCH PLY	$\frac{1}{2}$ "	$4\frac{1}{2}$ "	$11\frac{13}{16}$ "	KIT FROM DRAWER BOX SPECIALITIES
10	1	DRAWER BOTTOM	BALTIC BIRCH PLY	$\frac{1}{4}$ "	$11\frac{1}{2}$ "	$12\frac{5}{8}$ "	KIT FROM DRAWER BOX SPECIALITIES
11	6	VERTICAL SLATS	SOLID RED OAK	8mm	$1\frac{1}{4}$ "	$12\frac{3}{4}$ "	
12		BOTTOM SIDE RAILS	RED OAK PLY	$\frac{3}{4}$ "			EDGE 1 LONG
13	1	BOTTOM FRONT RAIL	RED OAK PLY	$\frac{3}{4}$ "	$3\frac{1}{2}$ "	$13\frac{3}{4}$ "	EDGE 1 LONG
14	1	BOTTOM REAR RAIL	RED OAK PLY	$\frac{3}{4}$ "			
15	1	DECK	RED OAK PLY	$\frac{3}{4}$ "			
16	4	LEGS	SOLID RED OAK	1"	1"		

FILL IN OPEN CELLS (5 POINTS EACH)
This portion of the competition is worth 110 of 1000 points.

KEEP FOR CONTEST

CONTESTANT #

SkillsUSA	
CALIFORNIA	
STATE CONTEST	
ITEM: WOOD END TABLE	
DATE: APRIL	COMPETITION DATE: 2024
SCALE: N/A	DWG #: BOM
DRAWN BY: DW	
SPECIAL SPONSORS:	
Duckworks Millwork Solutions	

NOTES:

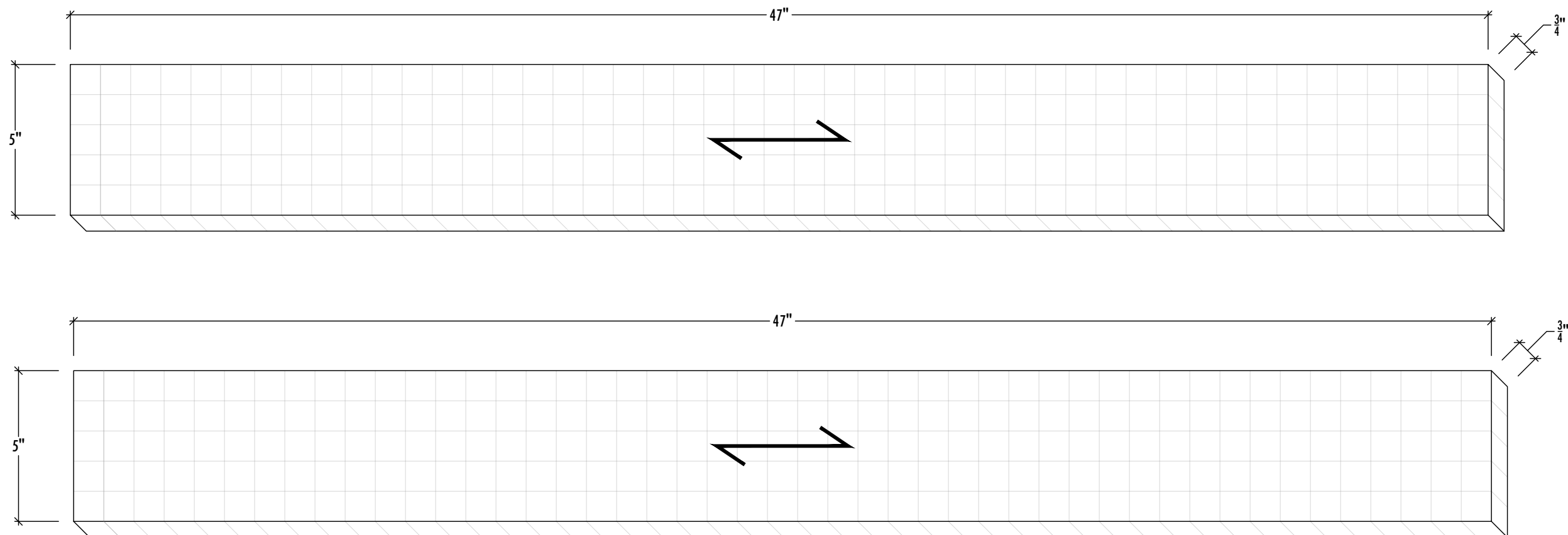
BILL OF MATERIALS							
#	QTY	DESCRIPTION	MATERIAL	THICKNESS	WIDTH	LENGTH	NOTES
1	1	TOP	RED OAK PLY	$\frac{3}{4}$ "			
2		SIDE SELF EDGES	SOLID RED OAK	$\frac{3}{4}$ "	2"		MITER 1 END
3	1	FRONT SELF EDGE	SOLID RED OAK	$\frac{3}{4}$ "	2"		MITER 2 ENDS
4		STRETCHERS	RED OAK PLY	$\frac{3}{4}$ "			
5		TOP SIDE RAILS	RED OAK PLY	$\frac{3}{4}$ "			EDGE 1 LONG
6	1	TOP REAR RAIL	RED OAK PLY	$\frac{3}{4}$ "	$6\frac{5}{8}$ "		
7	1	DRAWER FRONT	SOLID RED OAK	$\frac{3}{4}$ "			FROM DECORE-ATIVE SPECIALTIES
8	2	DRAWER FRONT&BACK	BALTIC BIRCH PLY	$\frac{1}{2}$ "	$4\frac{1}{2}$ "	$13\frac{1}{8}$ "	KIT FROM DRAWER BOX SPECIALITIES
9	2	DRAWER SIDES	BALTIC BIRCH PLY	$\frac{1}{2}$ "	$4\frac{1}{2}$ "	$11\frac{13}{16}$ "	KIT FROM DRAWER BOX SPECIALITIES
10	1	DRAWER BOTTOM	BALTIC BIRCH PLY	$\frac{1}{4}$ "	$11\frac{1}{2}$ "	$12\frac{5}{8}$ "	KIT FROM DRAWER BOX SPECIALITIES
11	6	VERTICAL SLATS	SOLID RED OAK	8mm	$1\frac{1}{4}$ "	$12\frac{3}{4}$ "	
12		BOTTOM SIDE RAILS	RED OAK PLY	$\frac{3}{4}$ "			EDGE 1 LONG
13	1	BOTTOM FRONT RAIL	RED OAK PLY	$\frac{3}{4}$ "	$3\frac{1}{2}$ "	$13\frac{3}{4}$ "	EDGE 1 LONG
14	1	BOTTOM REAR RAIL	RED OAK PLY	$\frac{3}{4}$ "			
15	1	DECK	RED OAK PLY	$\frac{3}{4}$ "			
16	4	LEGS	SOLID RED OAK	1"	1"		

FILL IN OPEN CELLS (5 POINTS EACH)
This portion of the competition is worth 110 of 1000 points.

SUBMIT TO JUDGE

CONTESTANT #

SkillsUSA	
CALIFORNIA	
STATE CONTEST	
ITEM: WOOD END TABLE	
DATE: APRIL	COMPETITION DATE: 2024
SCALE: N/A	DWG #: BOM
DRAWN BY: DW	
SPECIAL SPONSORS:	
Duckworks Millwork Solutions	



FOR THE BOTTOM RAIL & STRETCHER PARTS (PARTS # 4,12,13 & 14) YOU WILL RECEIVE 2 PIECE OF SHEET STOCK, 2 PC. @ $\frac{3}{4}$ " X 5" X 47"

CONTESTANT #

MATERIAL LAYOUT INSTRUCTIONS

Once you've completed your Bill of Materials, lay out the parts on each corresponding piece of material. Do this by drawing a line vertically and/or horizontally to indicate saw cut. Label each piece with the part name and overall dimensions. Draw an "X" on any scrap pieces. Pay close attention to the grain direction of each piece.

This portion of the competition is worth 40 of 1000 points.

Note: Each square is scaled to 1" Squared.

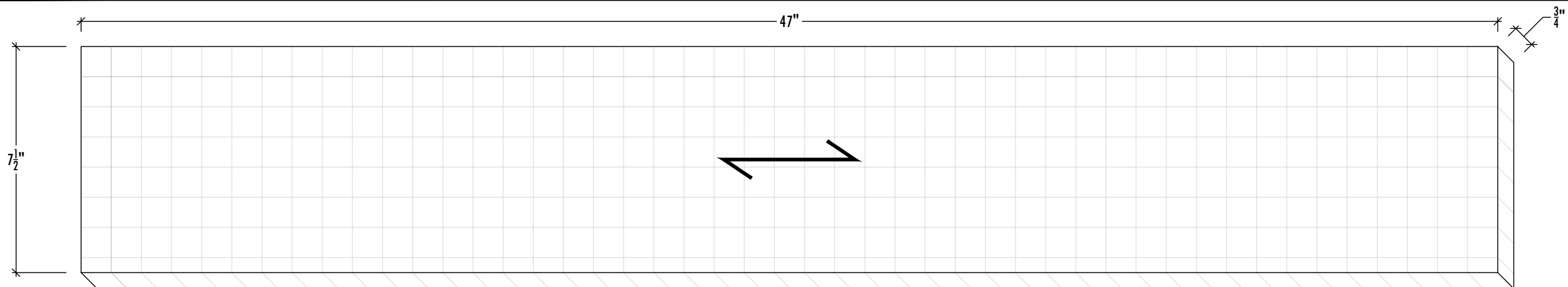
KEEP FOR CONTEST

SkillsUSA
CALIFORNIA
STATE CONTEST

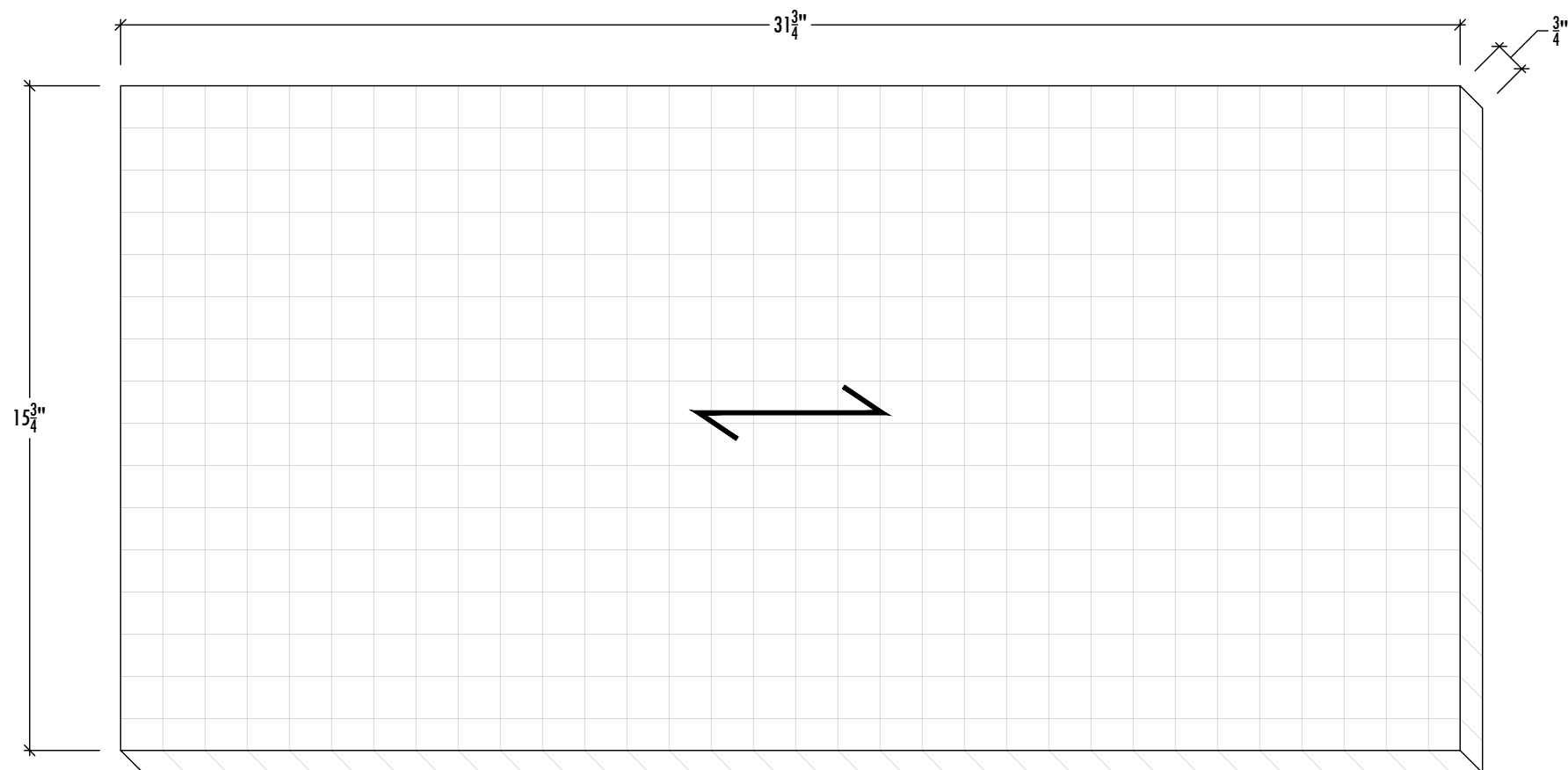
ITEM: WOOD END TABLE	
DATE: APRIL	COMPETITION DATE: 2024
SCALE: N/A	DWG #: LAYOUT A
DRAWN BY: DW	

SPECIAL SPONSORS:

Duckworks
Millwork Solutions



FOR THE TOP RAIL PARTS (PARTS # 5 & 6) YOU WILL RECEIVE 1 PIECE OF SHEET STOCK, 1PC. @ $\frac{3}{4}$ " X $7\frac{1}{2}$ " X 47"



FOR THE TOP & FIXED SHELF PARTS (PARTS # 1 & 15) YOU WILL RECEIVE 1 PIECE OF SHEET STOCK, 1PC. @ $\frac{3}{4}$ " X $15\frac{3}{4}$ " X $31\frac{3}{4}$ "

MATERIAL LAYOUT INSTRUCTIONS

Once you've completed your Bill of Materials, lay out the parts on each corresponding piece of material. Do this by drawing a line vertically and/or horizontally to indicate saw cut. Label each piece with the part name and overall dimensions. Draw an "X" on any scrap pieces. Pay close attention to the grain direction of each piece.

This portion of the competition is worth 40 of 1000 points.

Note: Each square is scaled to 1" Squared.

KEEP FOR CONTEST

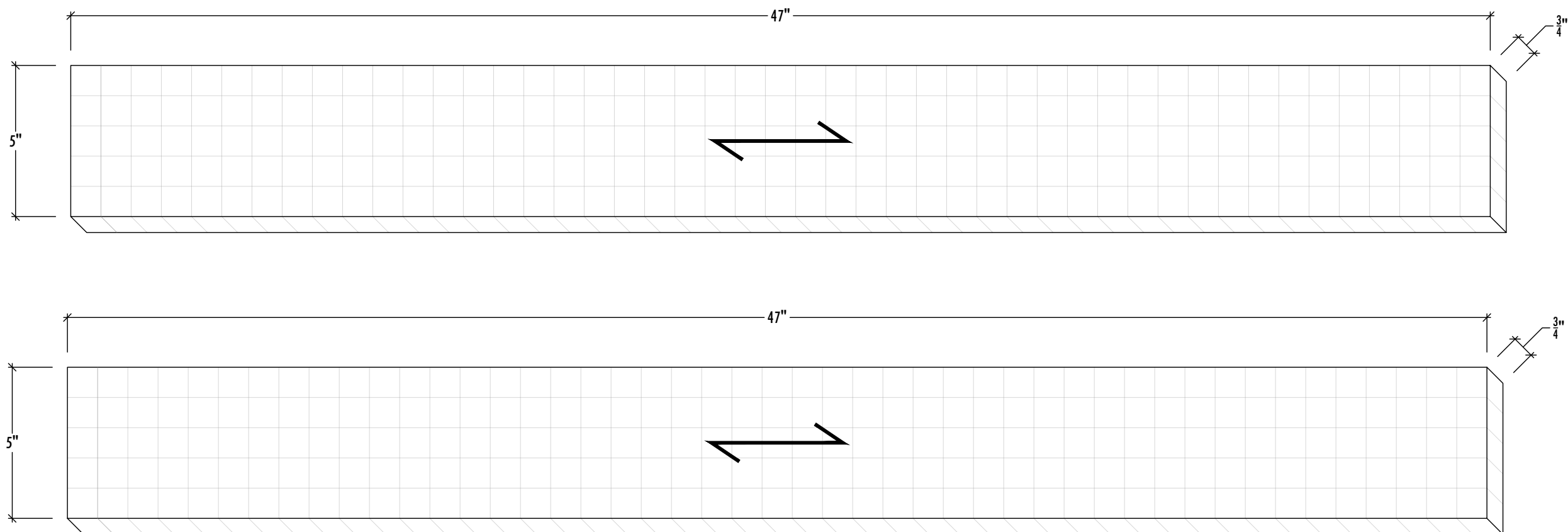
CONTESTANT #

SkillsUSA
CALIFORNIA
STATE CONTEST

ITEM: WOOD END TABLE	
DATE: APRIL	COMPETITION DATE: 2024
SCALE: N/A	DWG #: LAYOUT B
DRAWN BY: DW	

SPECIAL SPONSORS:

Duckworks
Millwork Solutions



FOR THE BOTTOM RAIL & STRETCHER PARTS (PARTS # 4,12,13 & 14) YOU WILL RECEIVE 2 PIECE OF SHEET STOCK, 2 PC. @ $\frac{3}{4}$ " X 5" X 47"

CONTESTANT #

MATERIAL LAYOUT INSTRUCTIONS

Once you've completed your Bill of Materials, lay out the parts on each corresponding piece of material. Do this by drawing a line vertically and/or horizontally to indicate saw cut. Label each piece with the part name and overall dimensions. Draw an "X" on any scrap pieces. Pay close attention to the grain direction of each piece.

This portion of the competition is worth 40 of 1000 points.

Note: Each square is scaled to 1" Squared.

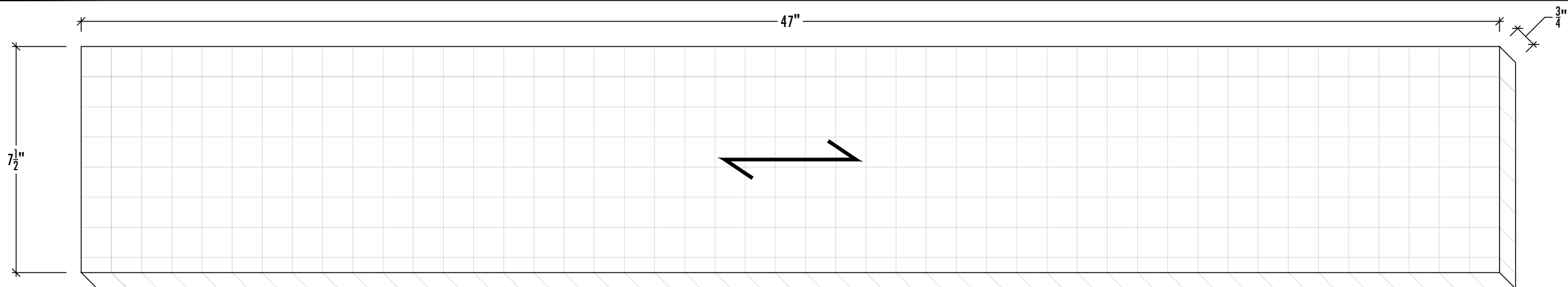
SUBMIT TO JUDGE

SkillsUSA
CALIFORNIA
STATE CONTEST

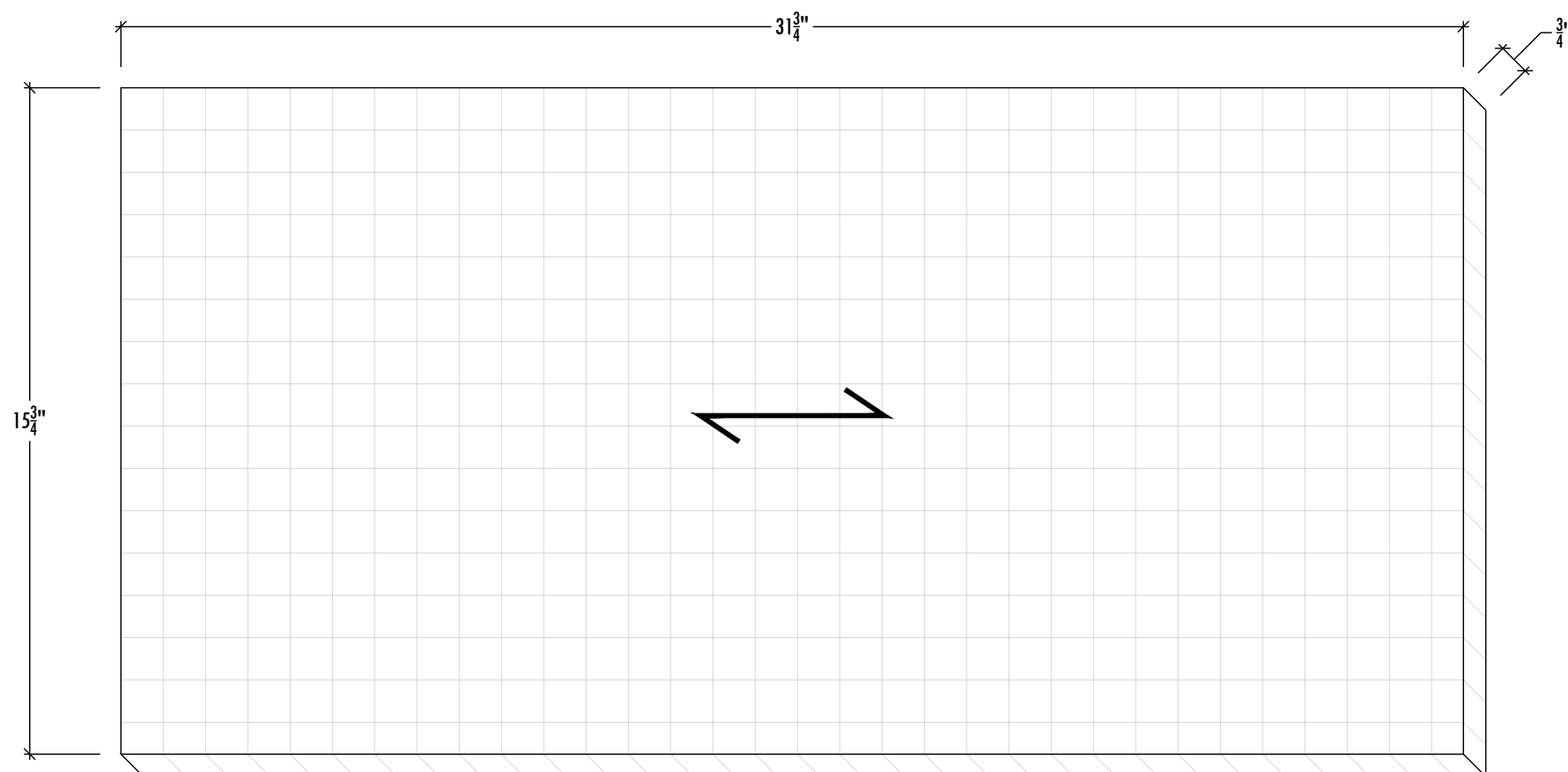
ITEM: WOOD END TABLE	
DATE: APRIL	COMPETITION DATE: 2024
SCALE: N/A	DWG #: LAYOUT A
DRAWN BY: DW	

SPECIAL SPONSORS:

Duckworks
Millwork Solutions



FOR THE TOP RAIL PARTS (PARTS # 5 & 6) YOU WILL RECEIVE 1 PIECE OF SHEET STOCK, 1PC. @ $\frac{3}{4}$ " X $7\frac{1}{2}$ " X 47"



FOR THE TOP & FIXED SHELF PARTS (PARTS # 1 & 15) YOU WILL RECEIVE 1 PIECE OF SHEET STOCK, 1PC. @ $\frac{3}{4}$ " X $15\frac{3}{4}$ " X $31\frac{3}{4}$ "

MATERIAL LAYOUT INSTRUCTIONS

Once you've completed your Bill of Materials, lay out the parts on each corresponding piece of material. Do this by drawing a line vertically and/or horizontally to indicate saw cut. Label each piece with the part name and overall dimensions. Draw an "X" on any scrap pieces. Pay close attention to the grain direction of each piece.

This portion of the competition is worth 40 of 1000 points.

Note: Each square is scaled to 1" Squared.

SUBMIT TO JUDGE

CONTESTANT #

SkillsUSA
CALIFORNIA
STATE CONTEST

ITEM: WOOD END TABLE	
DATE: APRIL	COMPETITION DATE: 2024
SCALE: N/A	DWG #: LAYOUT B
DRAWN BY: DW	

SPECIAL SPONSORS:

Duckworks
Millwork Solutions