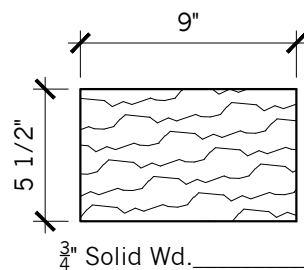
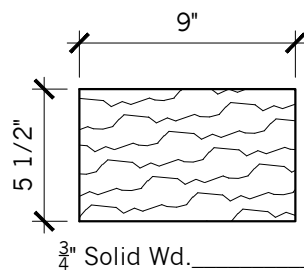
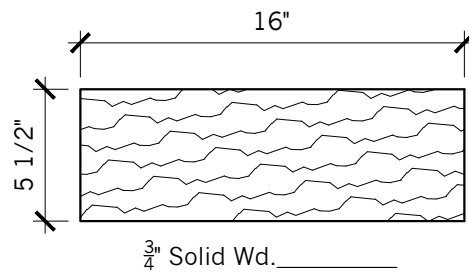
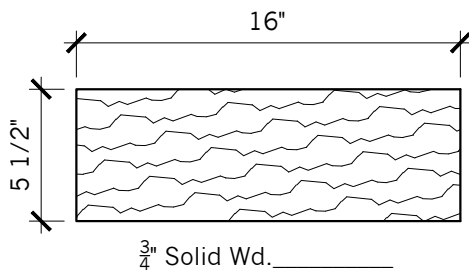
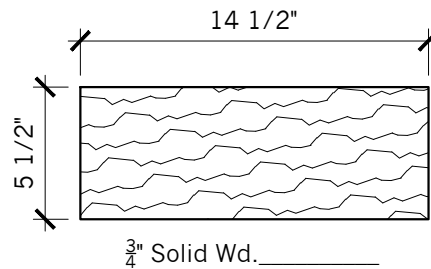
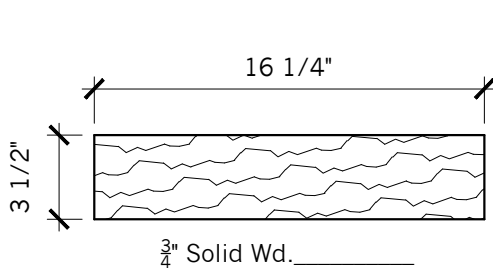


# GENERAL INSTRUCTIONS

CONTESTANT # \_\_\_\_\_

- 1.) Procure material listed in contest guidelines.
- 2.) Cut parts listed below from the solid and plywood stock. 1 part each!
- 3.) Use open cell to identify your parts (i.e. #1, #2, #3, "A", "B", "C", etc.)
- 4.) Have your cut solid stock and hardware ready for live contest.

ALL DIMENSIONS HAVE A  $\frac{1}{32}$ "  $\pm$  TOLERANCE



PARTS NEEDED FOR BUILD

2/8/2024



**INTRO WOODWORKING**  
**CALIFORNIA REGIONAL**  
**PROJECT PREPARATION**

DATE: 2024	JOB #: IW
DRAWN BY: sm/es	SCALE: 3"=1'-0"
DWG. NO.	

**PARTS**

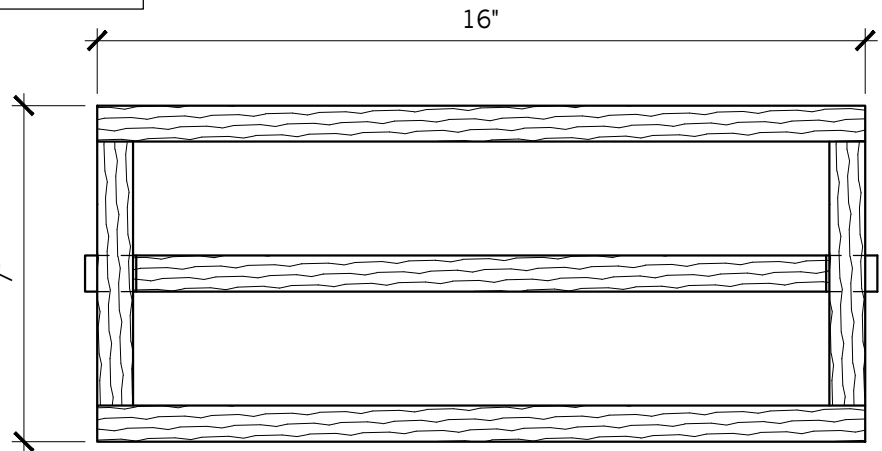
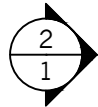
4 OF 5

# GENERAL INSTRUCTIONS

- 1.) Cut & pre-drill for clearance and pilot holes
  - 2.) Countersink and assemble with glue & 1  $\frac{3}{4}$ " screws
  - 3.) After assembly ease all sharp edges and corners
- ALL DIMENSIONS HAVE A  $\frac{1}{32}$ "  $\pm$  TOLERANCE

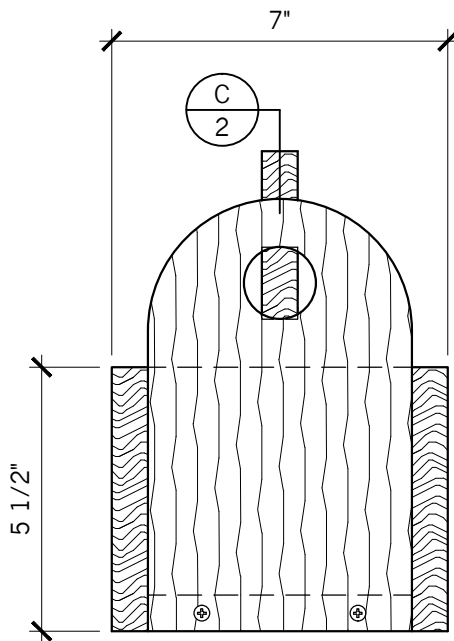
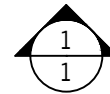
CONTESTANT # \_\_\_\_\_

PLEASE SEE SHEET 3  
FOR ISOMETRIC VIEW

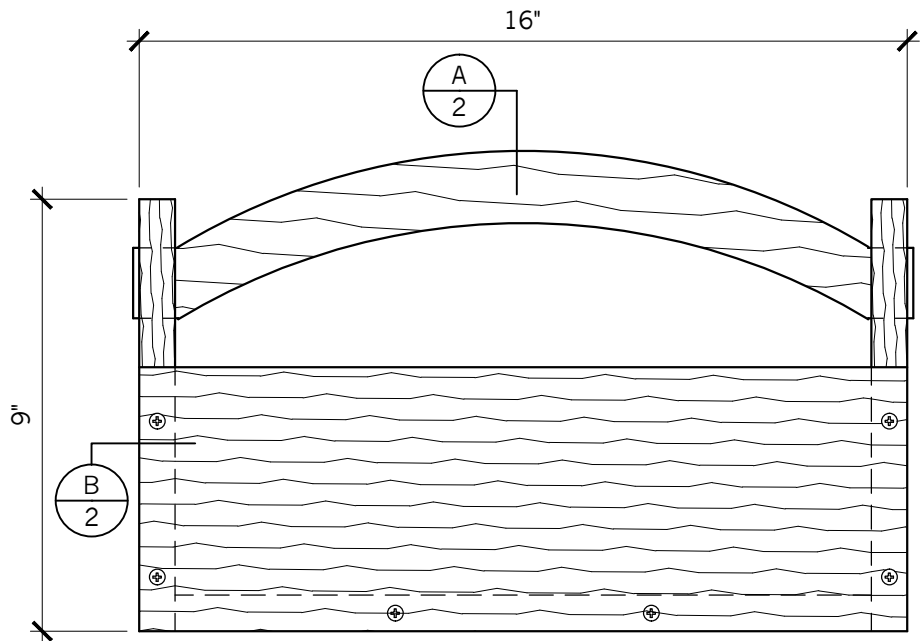


PLAN

SCALE: 3"=1'-0"



**2** ELEVATION  
SCALE: 3"=1'-0"



**1** ELEVATION  
SCALE: 3"=1'-0"

12/20/2023



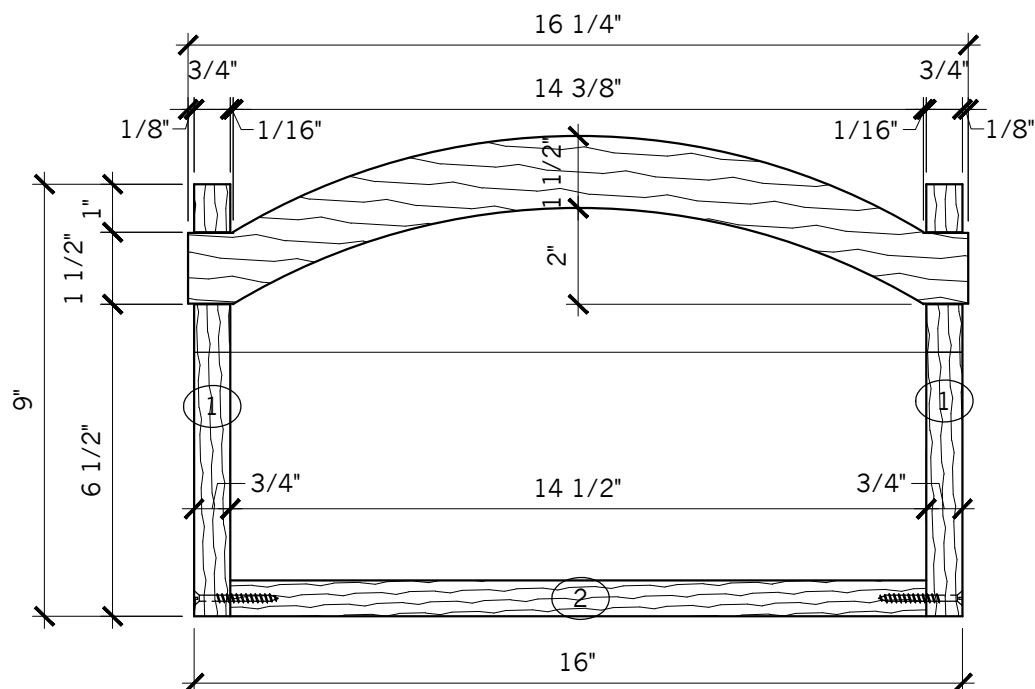
**INTRO WOODWORKING**  
**FOOT STOOL**  
**CALIFORNIA REGIONAL**

DATE: 2024	JOB #: <b>IW</b>
DRAWN BY: sm/es	SCALE: 3"=1'-0"
DWG. NO.	

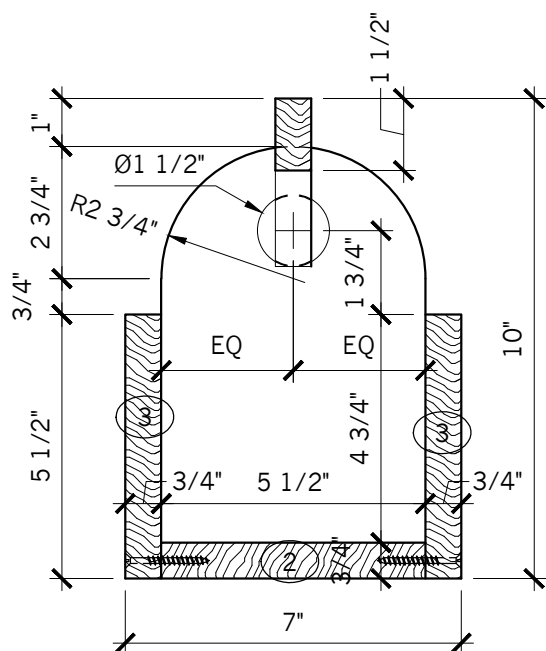
**1**

1 OF 5

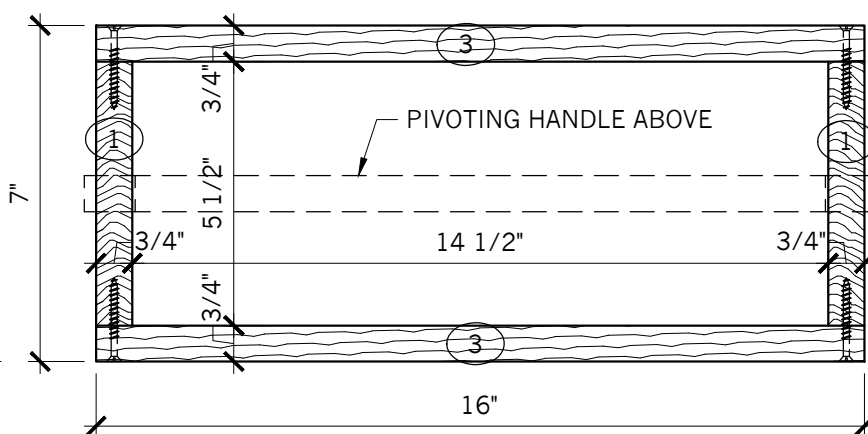
CONTESTANT #



**C** LONGIT SECTION  
SCALE: 3"=1'-0"



**A** VERT SECTION  
SCALE: 3"=1'-0"



**B** PLAN SECTION  
SCALE: 3"=1'-0"

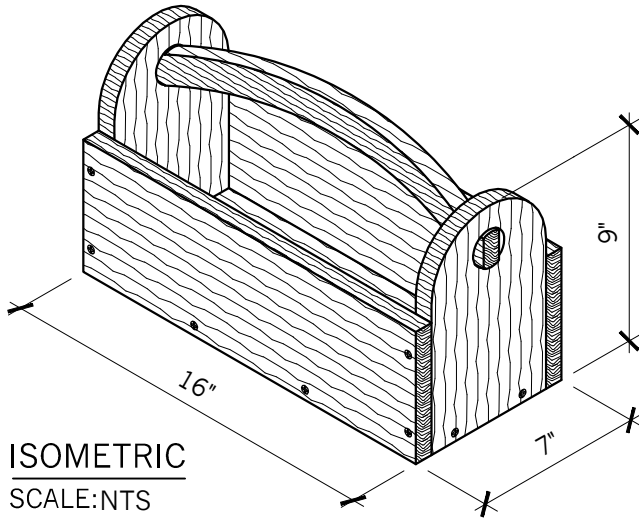
12/20/2023



**INTRO WOODWORKING**  
**SECTIONS**  
**CALIFORNIA REGIONAL**

DATE:	2024	JOB #:	IW
DRAWN BY:	sm/es	SCALE:	3"=1'-0"
DWG. NO.	2		

CONTESTANT #



# BILL OF MATERIALS

#	QTY	DESCRIPTION	MATERIAL	THICKNESS	WIDTH	LENGTH	NOTES
1		Ends	Solid Stock	$\frac{3}{4}$ "	$5 \frac{1}{2}$ "		Radius top, hole for handle
2		Bottom	Solid Stock	$\frac{3}{4}$ "			
3	2	Sides	Solid Stock		$5 \frac{1}{2}$ "		
4		Handle	Solid Stock	$\frac{3}{4}$ "			Use half template for profile
5							
6							

NOTES:

## BILL OF MATERIAL INSTRUCTIONS

In this phase of the competition you will have to look at Sheets 1 & 2.  
You will have to calculate some dimensions while others are given.  
This portion of the competition is worth 85 of 1000 points.

**ALL DIMENSIONS HAVE A  $\pm \frac{1}{32}$ " TOLERANCE**

12/20/2023



## INTRO WOODWORKING

**BILL OF MATERIALS  
CALIFORNIA REGIONAL**

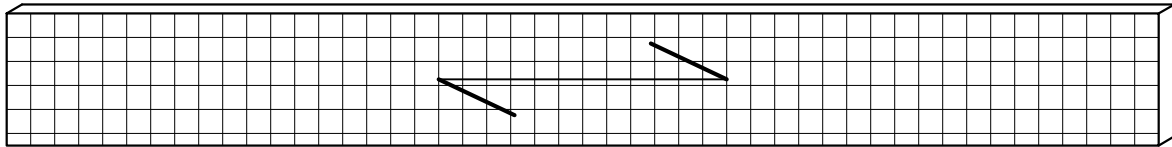
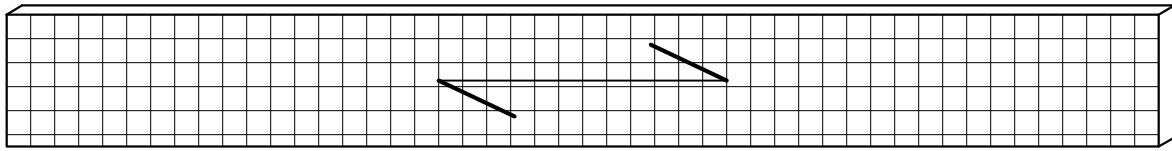
DATE: 2024	JOB #: <b>IW</b>
DRAWN BY: sm/es	SCALE: NTS

DWG. NO.

# 3

3 OF 5

CONTESTANT # \_\_\_\_\_



·YOU WILL RECEIVE ONE PIECE OF SOLID STOCK  
1 @  $\frac{3}{4}$ " x  $5\frac{1}{2}$ " $\pm$  x 96" $\pm$  (CUT IN HALF)

## MATERIAL LAYOUT INSTRUCTIONS

Once you've completed your Bill of Materials, lay out your parts on the corresponding material by drawing a line vertically and/or horizontally to represent the part.  
Hint: Label your part with Item #, Description or Size; sketch any details the part may have.

This portion of the competition is worth 150 of 1000 points.

Note: Each square is scaled to 1" Squared.

12/20/2023

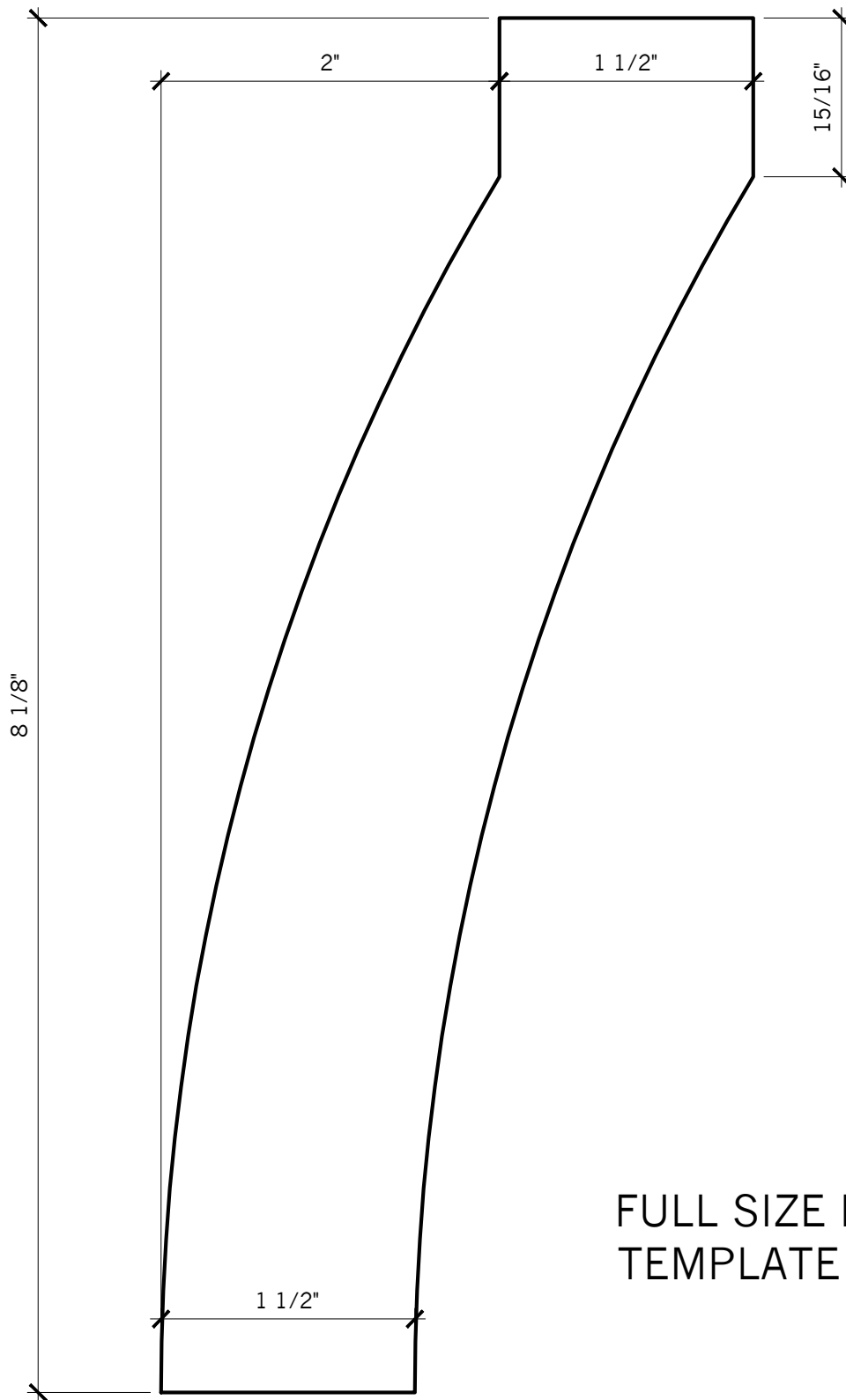


# INTRO WOODWORKING

MATERIAL LAYOUT  
CALIFORNIA REGIONAL

DATE:	2024	JOB #:	IW
DRAWN BY:	sm/es	SCALE:	3"=1'-0"
DWG. NO.	4		

4 OF 5



CONTESTANT # \_\_\_\_\_

FULL SIZE HANDLE  
TEMPLATE

12/20/2023



**INTRO WOODWORKING**  
**FULL SIZE HANDLE TEMPLATE**  
**CALIFORNIA REGIONAL**

DATE: 2024	JOB #: <b>IW</b>
DRAWN BY: sm/es	SCALE: FULL SIZE
DWG. NO. <b>5</b>	

5 OF 5