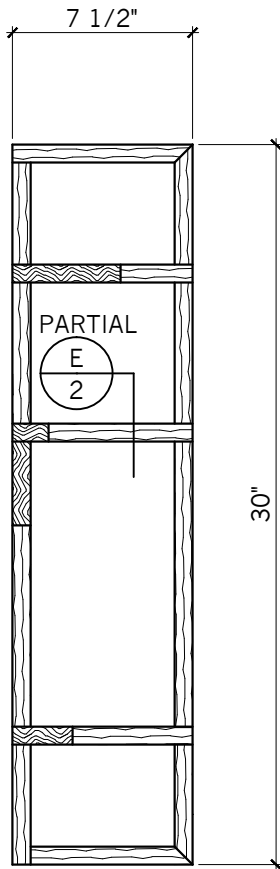


GENERAL INSTRUCTIONS

- 1.) Cut & pre-drill for clearance and pilot holes
 - 2.) Countersink and assemble with glue & 1 1/2" screws
 - 3.) After assembly ease all sharp edges and corners
- ALL DIMENSIONS HAVE A $\frac{1}{32}$ " \pm TOLERANCE

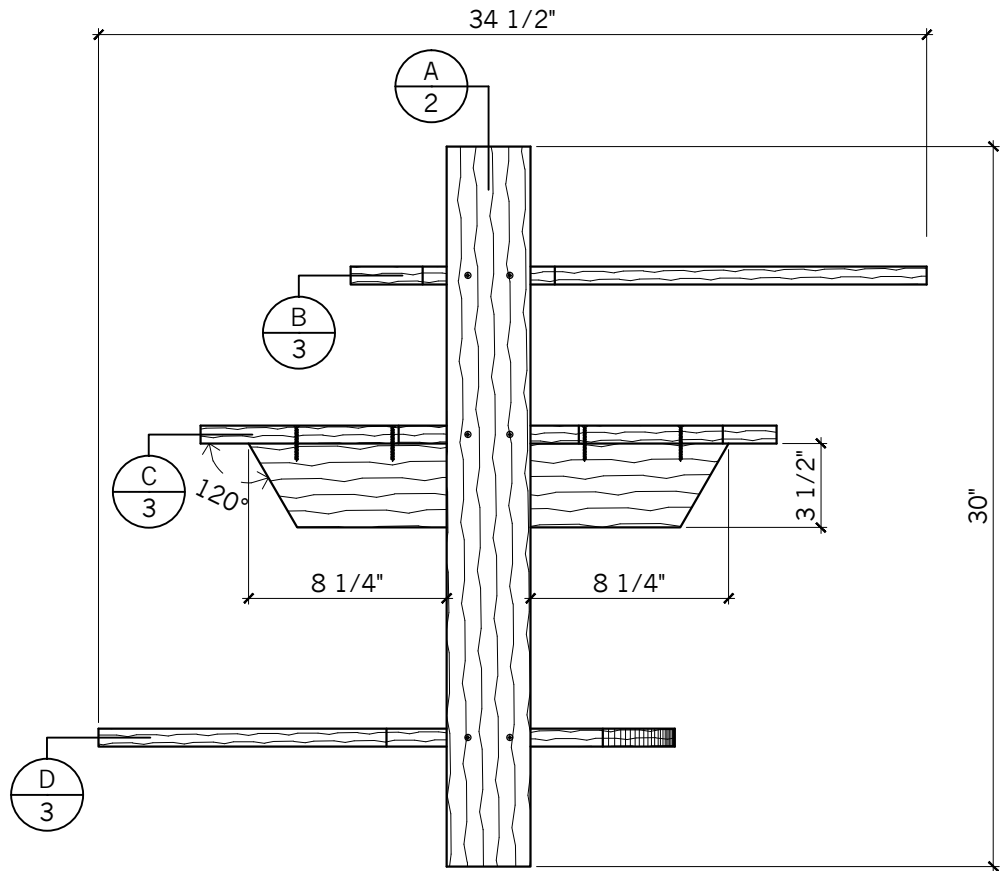
CONTESTANT # _____



2

ELEVATION

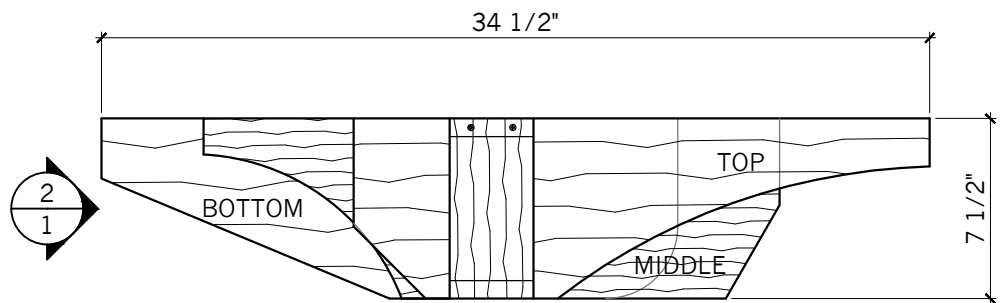
SCALE: 1 1/2"=1'-0"



1

ELEVATION

SCALE: 1 1/2"=1'-0"



PLAN

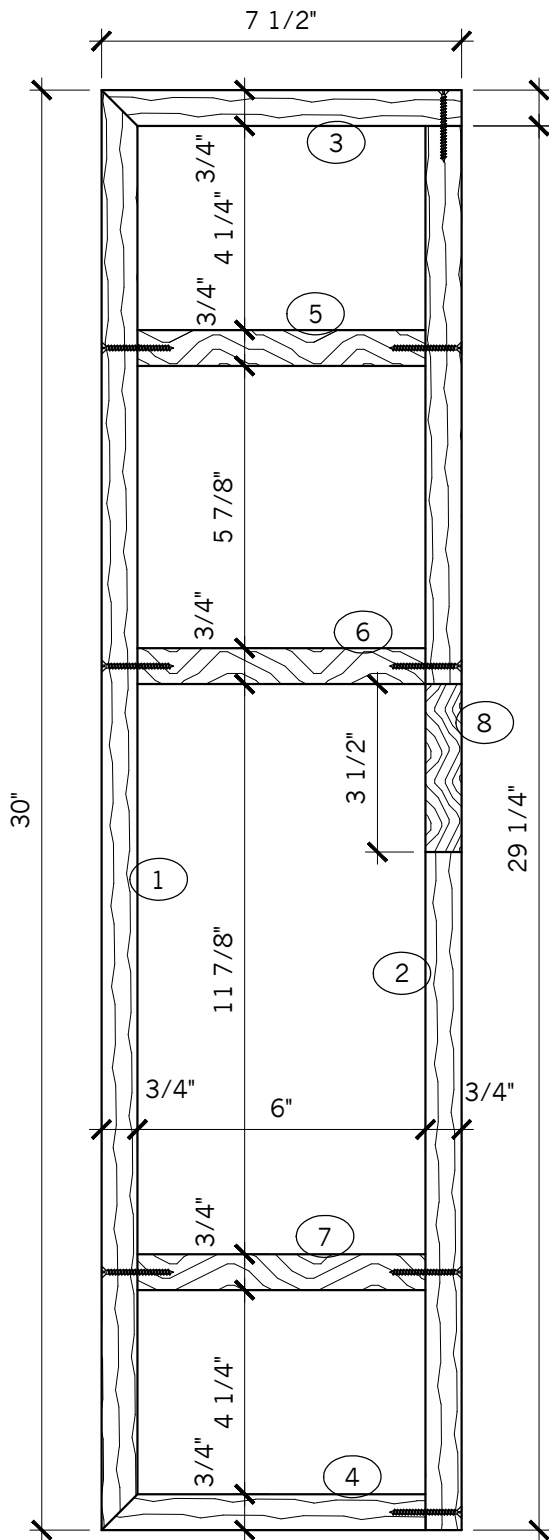
SCALE: 1 1/2"=1'-0"

1/3/2025



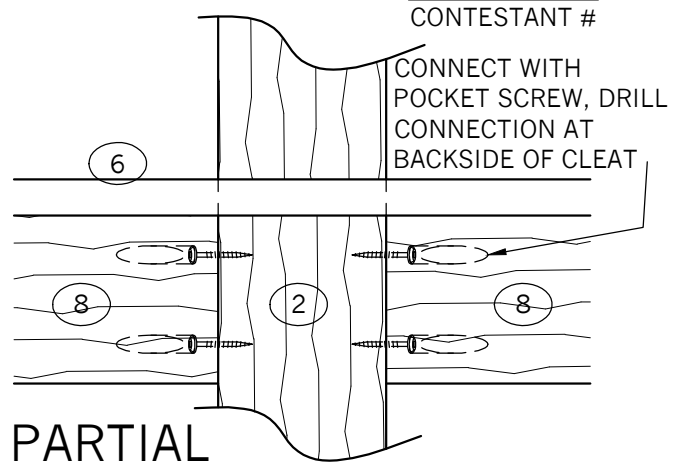
CABINETMAKING
WALL SHELF UNIT
CALIFORNIA REGIONAL

DATE: 2025	JOB #: CAB
DRAWN BY: sm	SCALE: 3"=1'-0"
DWG. NO. 1	

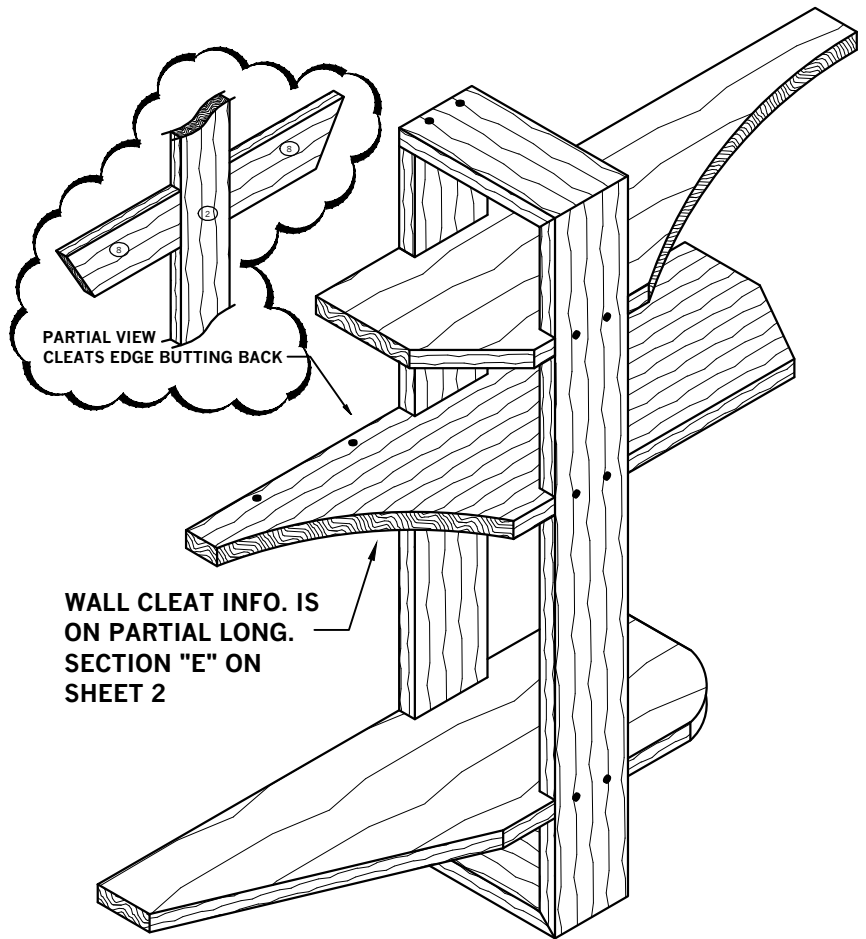


A VERT SECTION
SCALE: 3"=1'-0"

3/4"



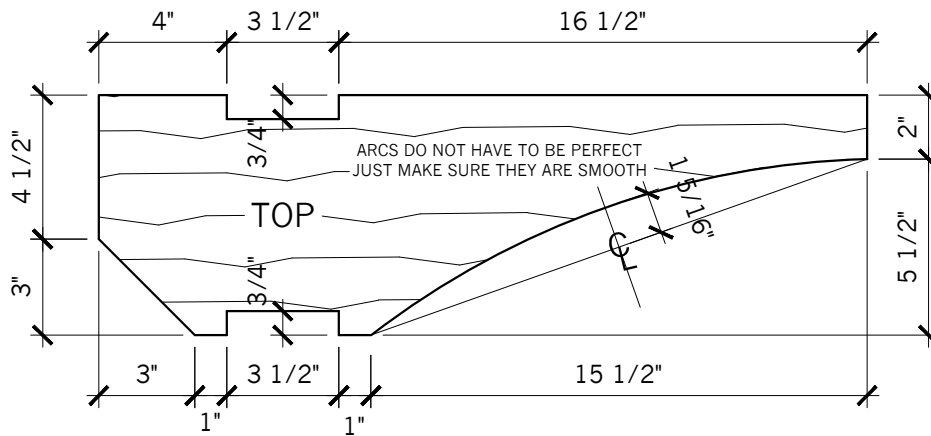
E PARTIAL LONGIT SECTION
SCALE: 3"=1'-0"



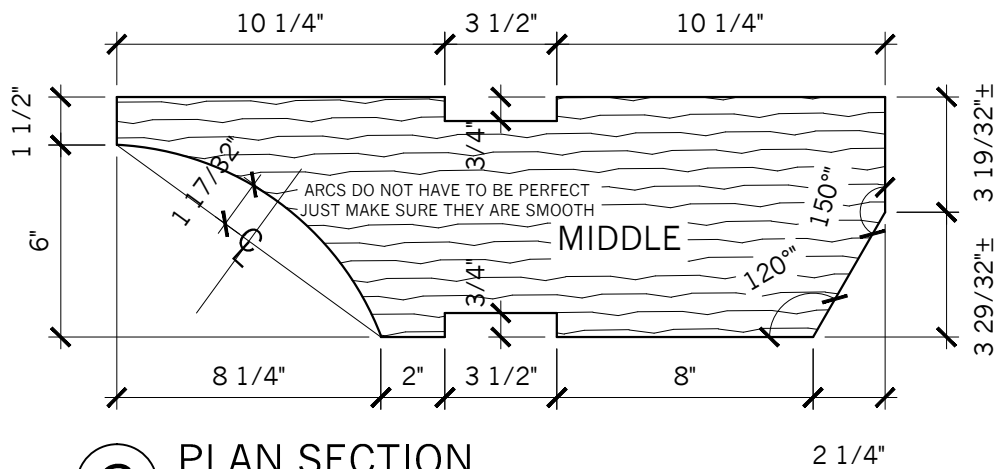
ISOMETRIC
SCALE: NTS

1/3/2025

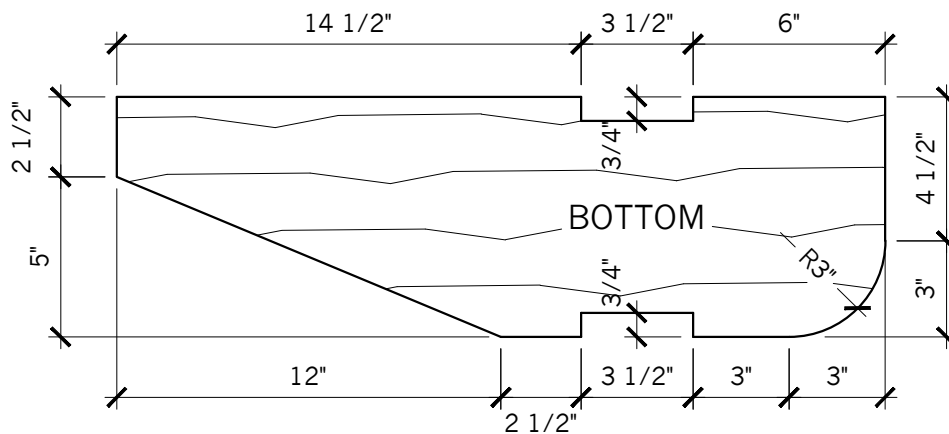
CONTESTANT #



B PLAN SECTION
SCALE: NTS



C PLAN SECTION
SCALE: NTS



D PLAN SECTION
SCALE: NTS

1/3/2025



CABINETMAKING
PLAN SECTIONS
CALIFORNIA REGIONAL

DATE: 2025	JOB #: CAB
DRAWN BY: sm	SCALE: NTS
DWG. NO. 3	

CONTESTANT #

BILL OF MATERIALS

#	QTY	DESCRIPTION	MATERIAL	THICKNESS	WIDTH	LENGTH	NOTES
1	1	Front	Solid Stock	$\frac{3}{4}$ "	$3\frac{1}{2}$ "		Miter 2 Ends, 45° Angle
2	1	Back	Solid Stock	$\frac{3}{4}$ "	$3\frac{1}{2}$ "		
3	1	Top	Solid Stock		$3\frac{1}{2}$ "		Miter 1 End, 45° Angle
4		Bottom	Solid Stock	$\frac{3}{4}$ "	$3\frac{1}{2}$ "		Miter 1 End, 45° Angle
5	1	Top Shelf	Solid Stock	$\frac{3}{4}$ "	$7\frac{1}{2}$ "	24"	Cut Taper and Arc
6	1	Middle Shelf	Solid Stock	$\frac{3}{4}$ "	$7\frac{1}{2}$ "		Cut Taper and Arc
7	1	Bottom Shelf	Solid Stock	$\frac{3}{4}$ "	$7\frac{1}{2}$ "	24"	Cut Tapers
8		Wall Cleats	Solid Stock			$8\frac{1}{4}$ "	Miter 1 End, 30° Angle
9							
10							

NOTES:

BILL OF MATERIAL INSTRUCTIONS

In this phase of the competition you will have to look at Sheets 1 & 2.

You will have to calculate some dimensions while others are given.

This portion of the competition is worth 85 of 1000 points.

ALL DIMENSIONS HAVE A $\pm \frac{1}{32}$ " TOLERANCE

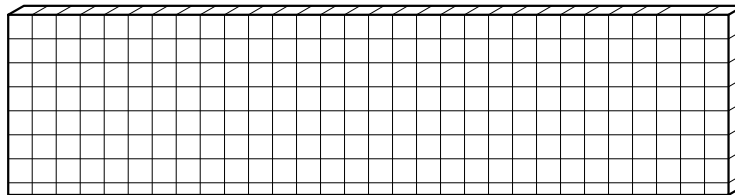
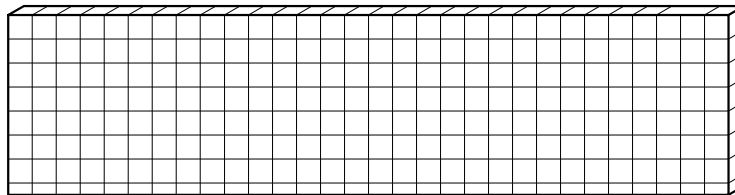
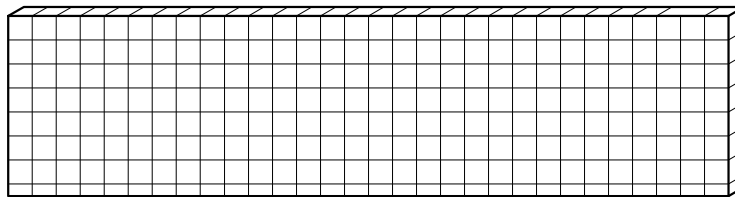
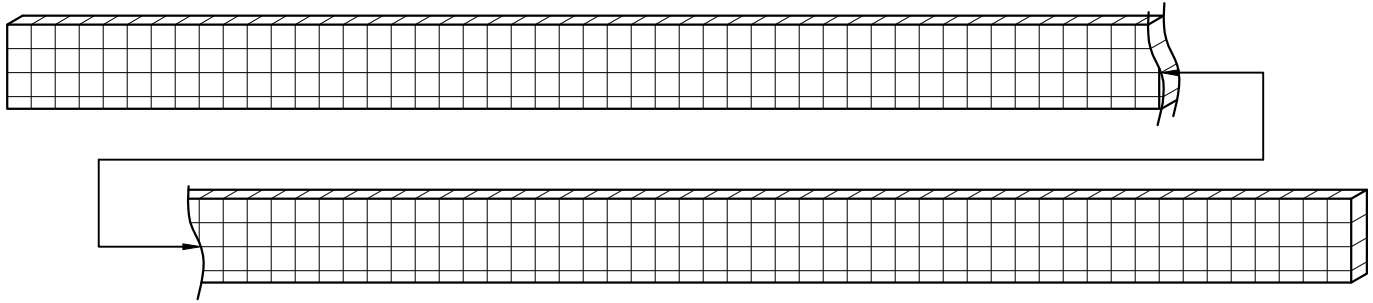
1/3/2025



CABINETMAKING
BILL OF MATERIALS
CALIFORNIA REGIONAL

DATE: 2025	JOB #: CAB
DRAWN BY: sm	SCALE: NTS
DWG. NO. 4	

CONTESTANT # _____



-YOU WILL RECEIVE FOUR (4) PIECES OF SOLID STOCK
 1 @ $\frac{3}{4}$ " x $3\frac{1}{2}$ " \pm x 96" \pm (FRONT, BACK, TOP, BOTTOM & CLEATS)
 1 @ $\frac{3}{4}$ " x $7\frac{1}{2}$ " \pm x 96" \pm (CUT IN THIRDS = 3 EQUAL PIECES, SHELVES)

MATERIAL LAYOUT INSTRUCTIONS

Once you've completed your Bill of Materials, lay out your parts on the corresponding material by drawing a line vertically and/or horizontally to represent the part.
 Hint: Label your part with Item #, Description or Size; sketch any details the part may have.
 This portion of the competition is worth 150 of 1000 points.
 Note: Each square is scaled to 1" Squared.

1/3/2025



CABINETMAKING
MATERIAL LAYOUT
CALIFORNIA REGIONAL

DATE: 2025	JOB #: CAB
DRAWN BY: sm	SCALE: 3"=1'-0"
DWG. NO. 5	