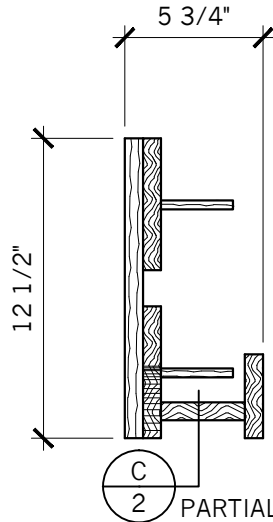


GENERAL INSTRUCTIONS

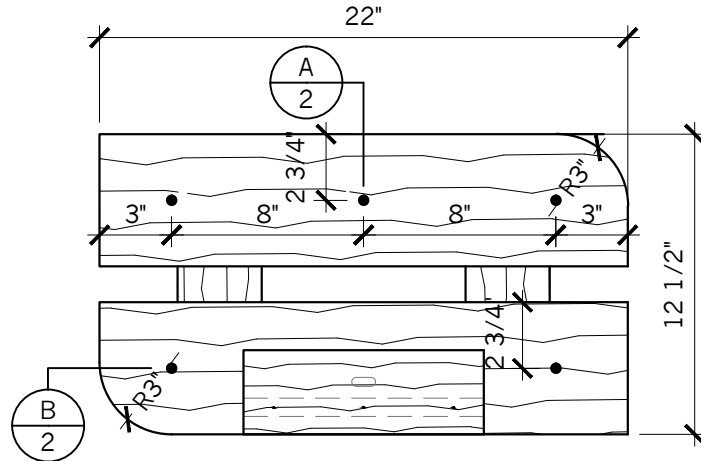
- 1.) Cut & pre-drill for clearance, pilot holes and countersink
- 2.) Cut short items like dowels need to cut with a handsaw.
- 3.) Assemble with glue, nails, & $1\frac{1}{4}$ " and $1\frac{1}{2}$ " screws
- 4.) After assembly ease all sharp edges and corners

ALL DIMENSIONS HAVE A $\frac{1}{32}$ " \pm TOLERANCE

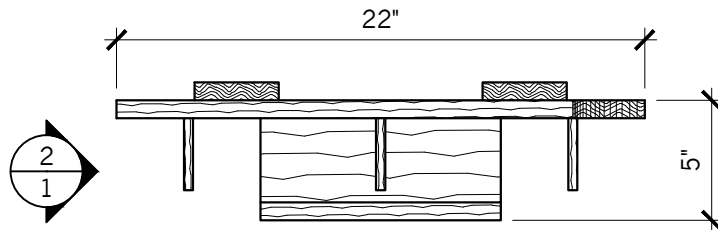
CONTESTANT #



2 PARTIAL
ELEVATION
SCALE: 1 1/2"=1'-0"

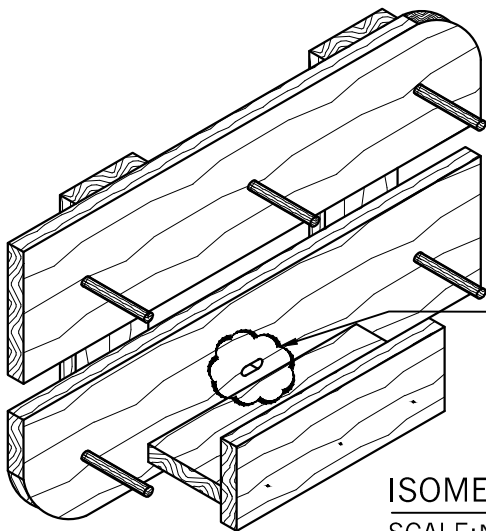


1 ELEVATION
SCALE: 1 1/2"=1'-0"



PLAN

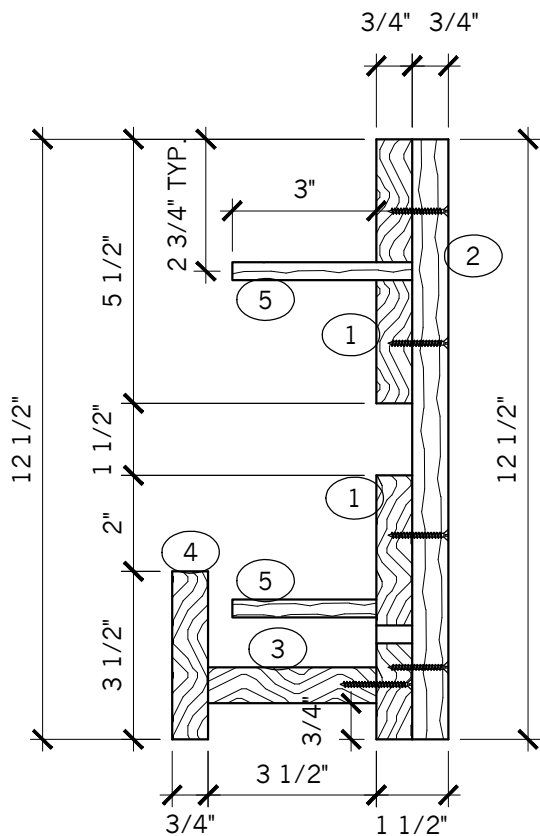
SCALE: 1 1/2"=1'-0"



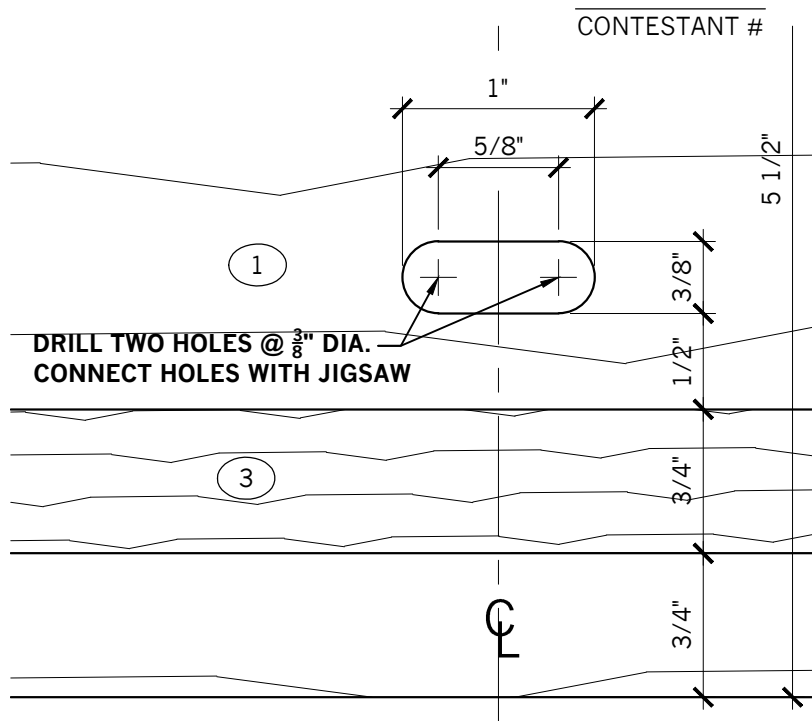
ISOMETRIC
SCALE: NTS

CUTOUT INFORMATION IS ON PARTIAL
LONGITUDINAL SECTION "C" ON SHEET 2

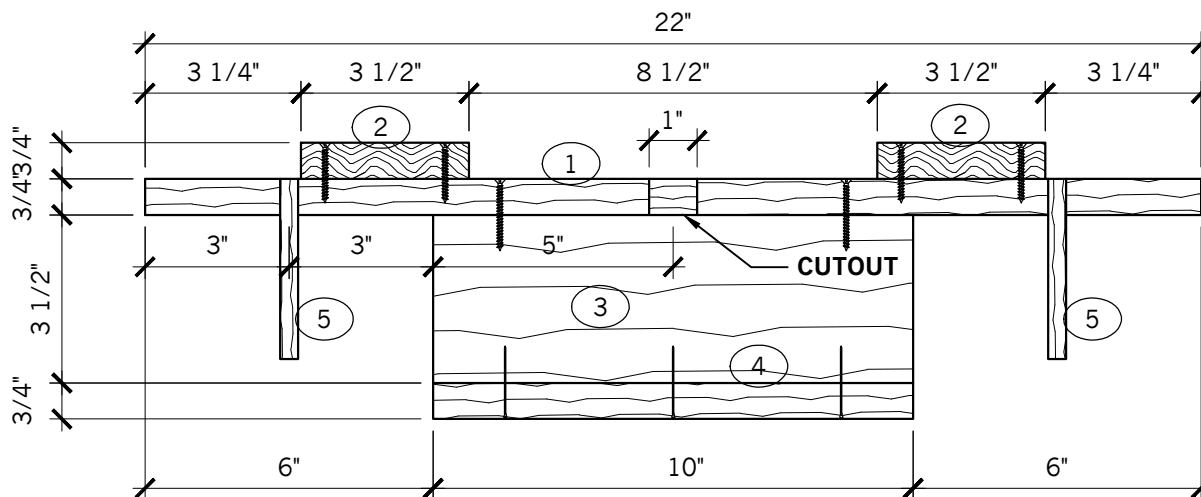
1/3/2025



A VERT SECTION
SCALE: 3"=1'-0"



C PARTIAL LONGIT SECTION
SCALE: FULL



B PLAN SECTION
SCALE: 3"=1'-0"

1/3/2025

CONTESTANT #

BILL OF MATERIALS

#	QTY	DESCRIPTION	MATERIAL	THICKNESS	WIDTH	LENGTH	NOTES
1		Backs	Solid Stock	$\frac{3}{4}"$	$5 \frac{1}{2}"$		Cut radius at end
2		Vert. Strechers	Solid Stock	$\frac{3}{4}"$	$3 \frac{1}{2}"$		
3		Shelf	Solid Stock	$\frac{3}{4}"$			
4		Front Apron	Solid Stock	$\frac{3}{4}"$	$3 \frac{1}{2}"$		
5	5	Dowels	Dowel Rod	$\frac{3}{8}"$	N/A"		Cut with handsaw
6							
7							
8							
9							
10							

NOTES:

BILL OF MATERIAL INSTRUCTIONS

In this phase of the competition you will have to look at Sheets 1 & 2.

You will have to calculate some dimensions while others are given.

This portion of the competition is worth 85 of 1000 points.

ALL DIMENSIONS HAVE A $\pm \frac{1}{32}"$ TOLERANCE

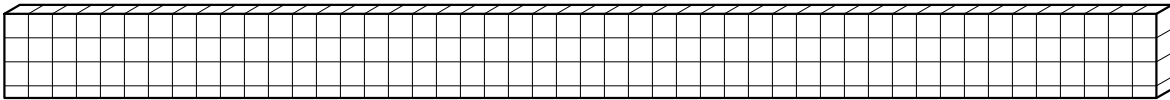
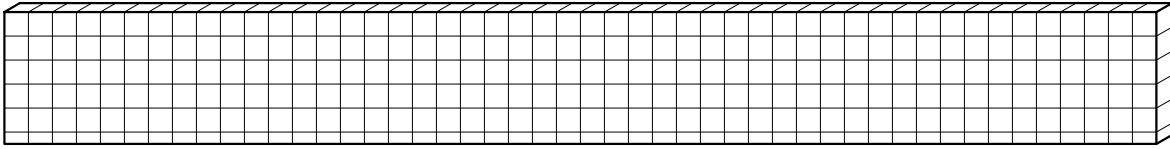
1/3/25



INTRO WOODWORKING
BILL OF MATERIALS
CALIFORNIA REGIONAL

DATE:	2025	JOB #:	IW
DRAWN BY:	sm	SCALE:	NTS
DWG. NO.		3	

CONTESTANT # _____



-YOU WILL RECEIVE TWO PIECES OF SOLID STOCK
1 @ $\frac{3}{4}$ " x $5\frac{1}{2}$ " \pm x 48" \pm (BACKS) AND
1 @ $\frac{3}{4}$ " x $3\frac{1}{2}$ " \pm x 48" \pm (STRETCHERS, SHELF, FRONT APRON)

-YOU WILL ALSO RECEIVE ONE DOWEL ROD
1 @ $\frac{3}{8}$ " x 24" \pm (MUST CUT WITH HANDSAW)



_____ PCS @ $\frac{3}{8}$ " X _____ LONG

(FILL IN THE BLANKS)

MATERIAL LAYOUT INSTRUCTIONS

Once you've completed your Bill of Materials, lay out your parts on the corresponding material by drawing a line vertically and/or horizontally to represent the part.
Hint: Label your part with Item #, Description or Size; sketch any details the part may have.

This portion of the competition is worth 150 of 1000 points.

Note: Each square is scaled to 1" Squared.

1/3/2025



INTRO WOODWORKING

MATERIAL LAYOUT

CALIFORNIA REGIONAL

DATE:	2025	JOB #:	IW
DRAWN BY:	sm	SCALE:	3"=1'-0"
DWG. NO.	4		

4 OF 4