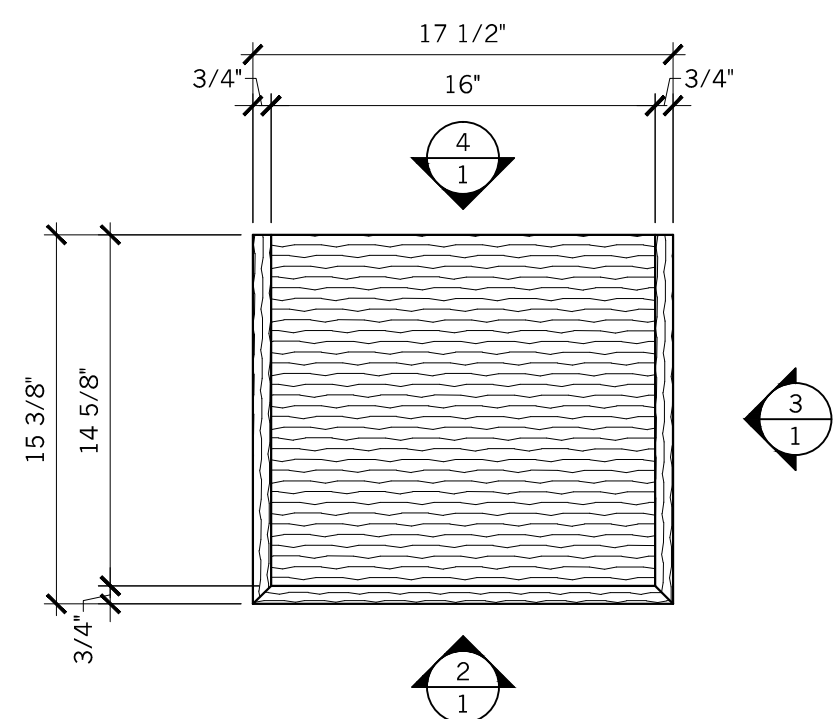


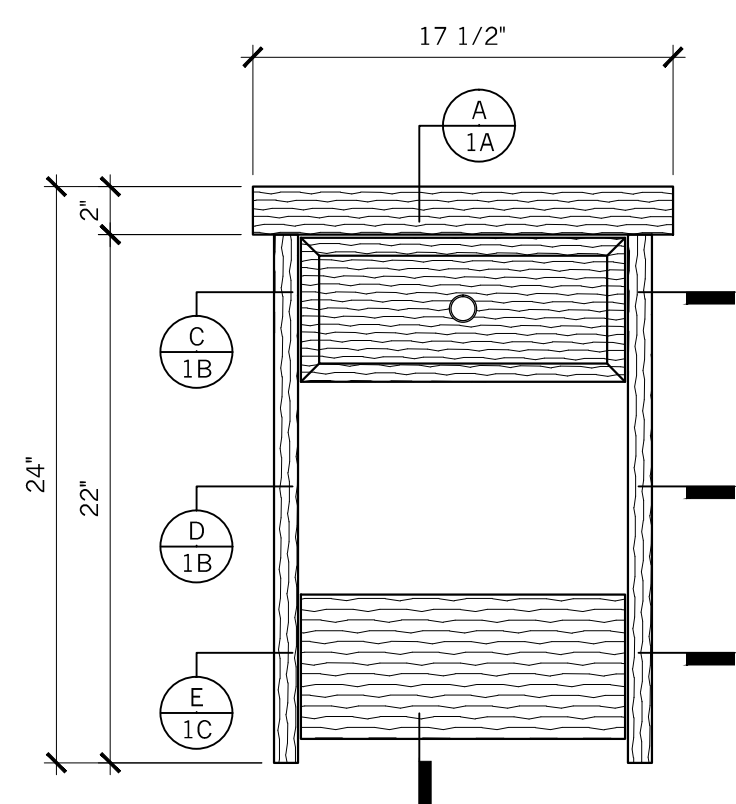
SkillsUSA

CALIFORNIA STATE CONTEST

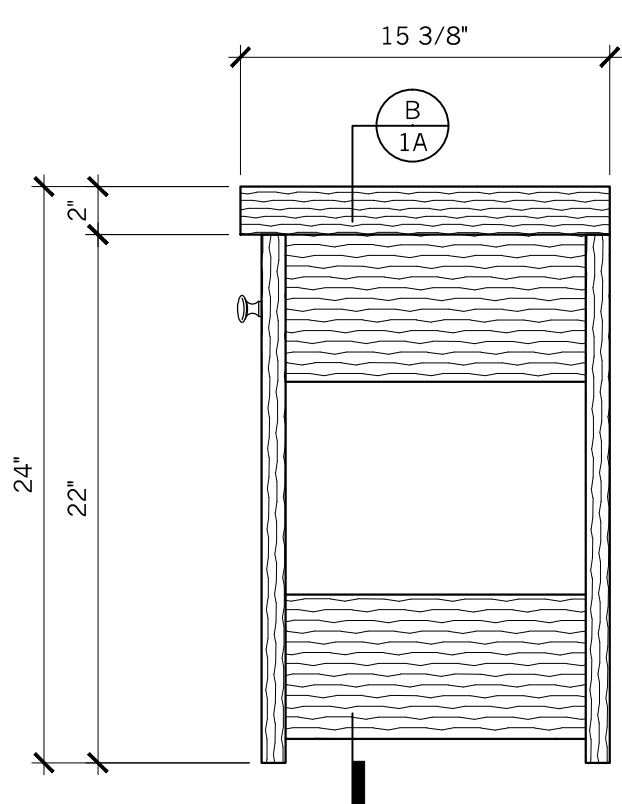
CONFIDENTIAL



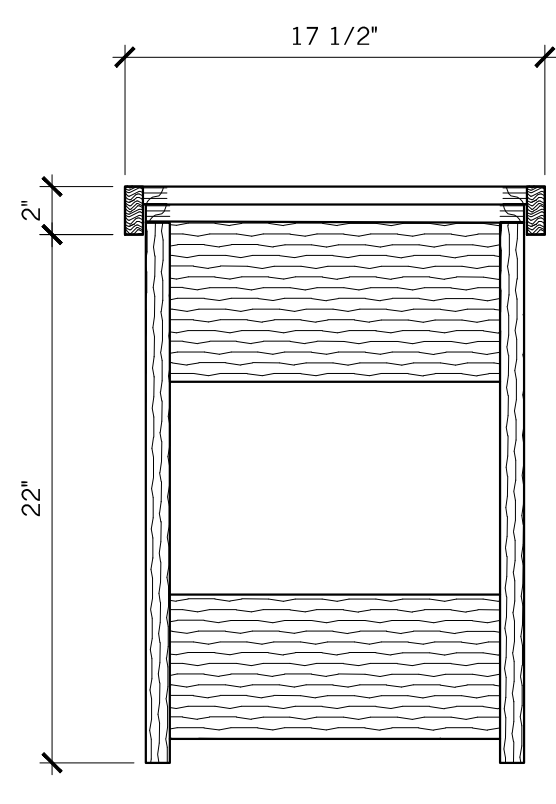
1 PLAN VIEW
SCALE: 1 1/2"=1'-0"



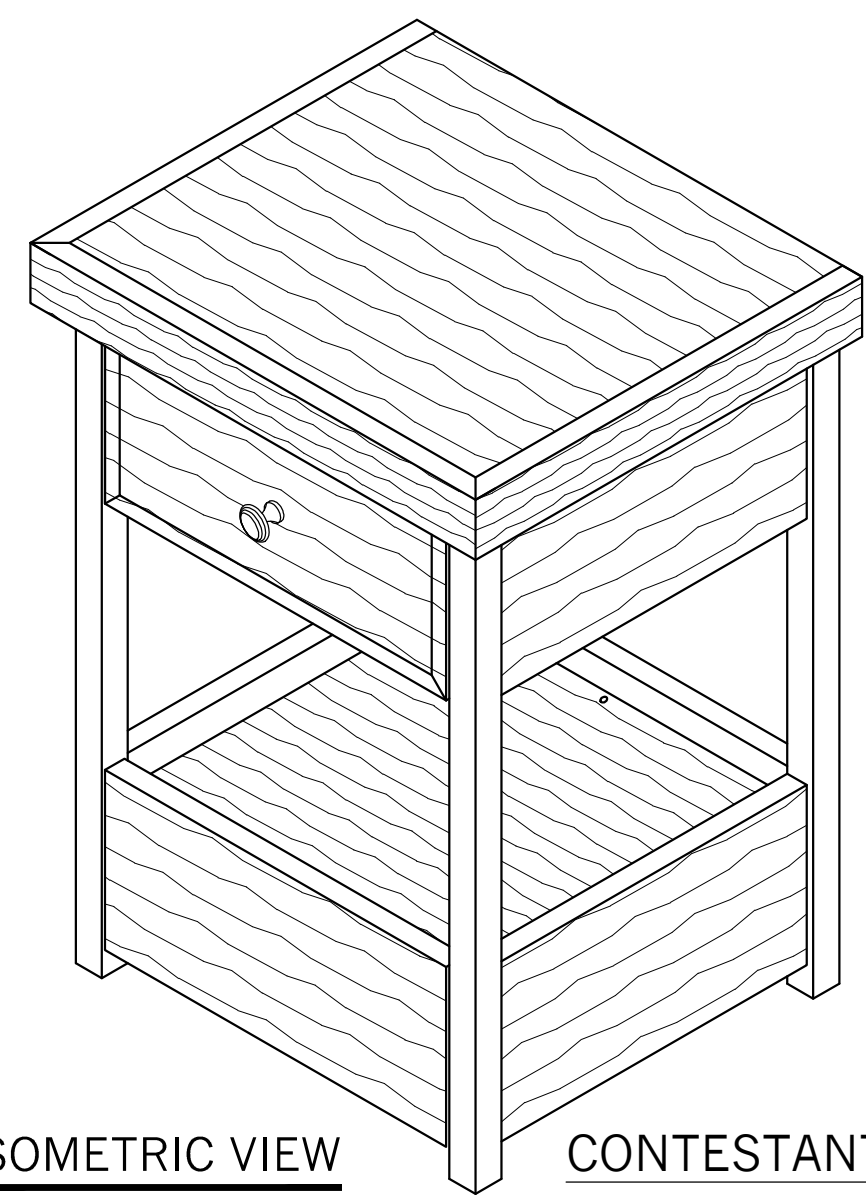
2 ELEVATION
SCALE: 1 1/2"=1'-0"



3 ELEVATION
SCALE: 1 1/2"=1'-0"



4 ELEVATION
SCALE: 1 1/2"=1'-0"



ISOMETRIC VIEW
SCALE: NTS

CONTESTANT #

SkillsUSA

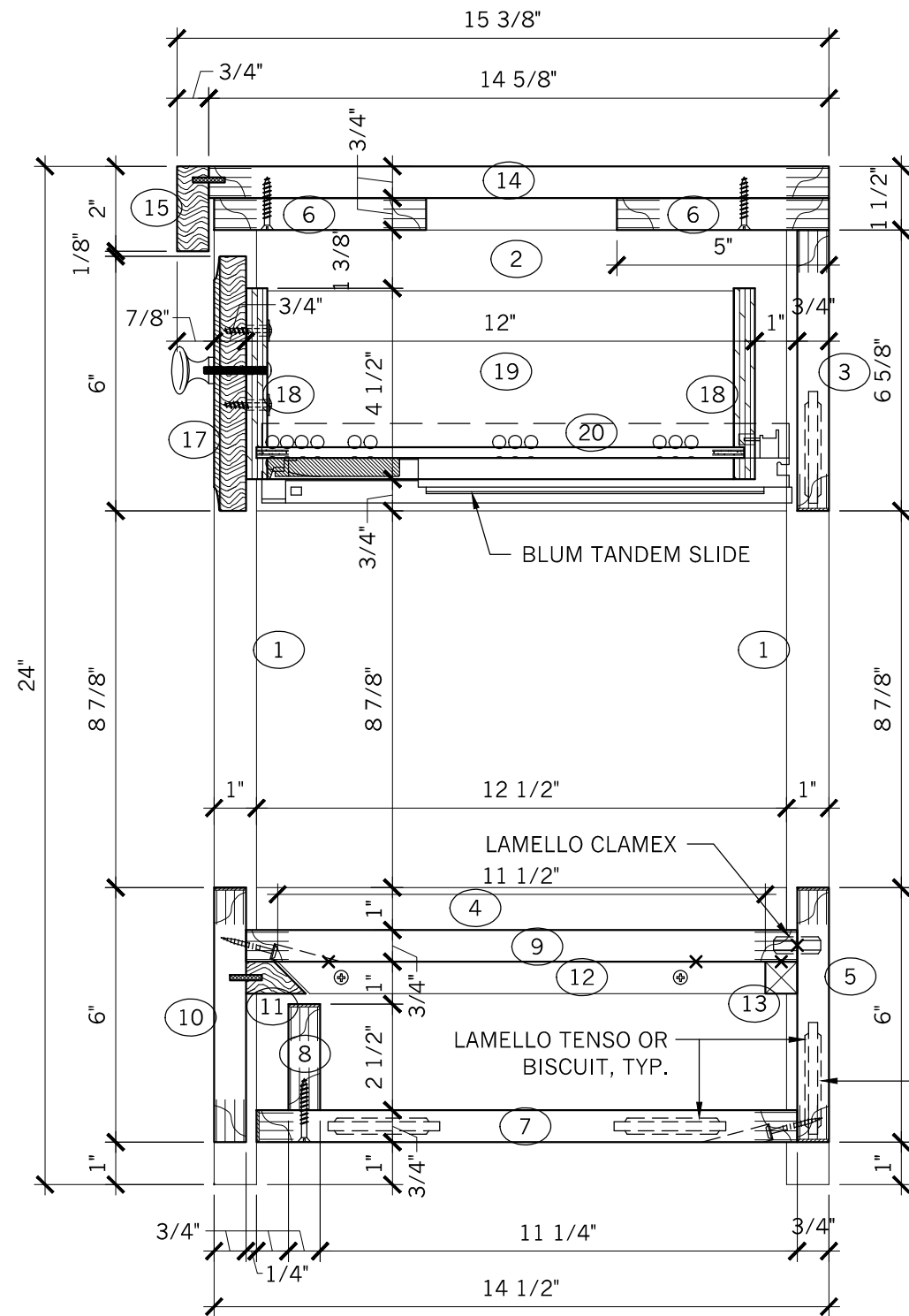
CALIFORNIA STATE CONTEST

ITEM: WOOD END TABLE	
DATE: APRIL	2023
SCALE: AS SHOWN	DWG #: 1
DRAWN BY: SM/ES	

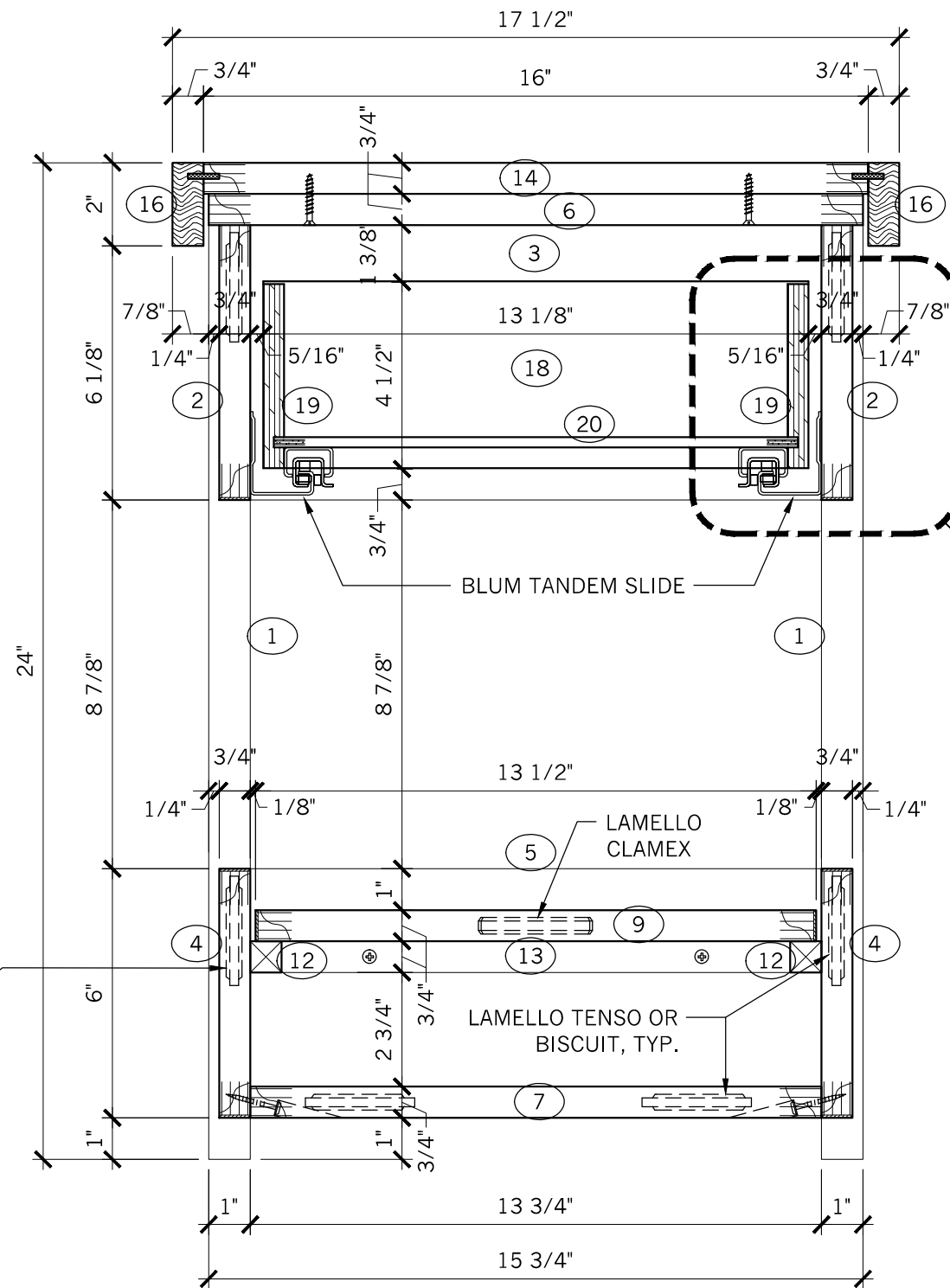
SPECIAL SPONSORS:

AWFS
ASSOCIATION OF
WOODWORKING
& FURNISHINGS
SUPPLIERS

ARCHITECTURAL
WOODWORKING
COMPANY



A VERT SECTION
SCALE: 3"=1'-0"



B LONGIT SECTION
SCALE: 3"=1'-0"



CONTESTANT #

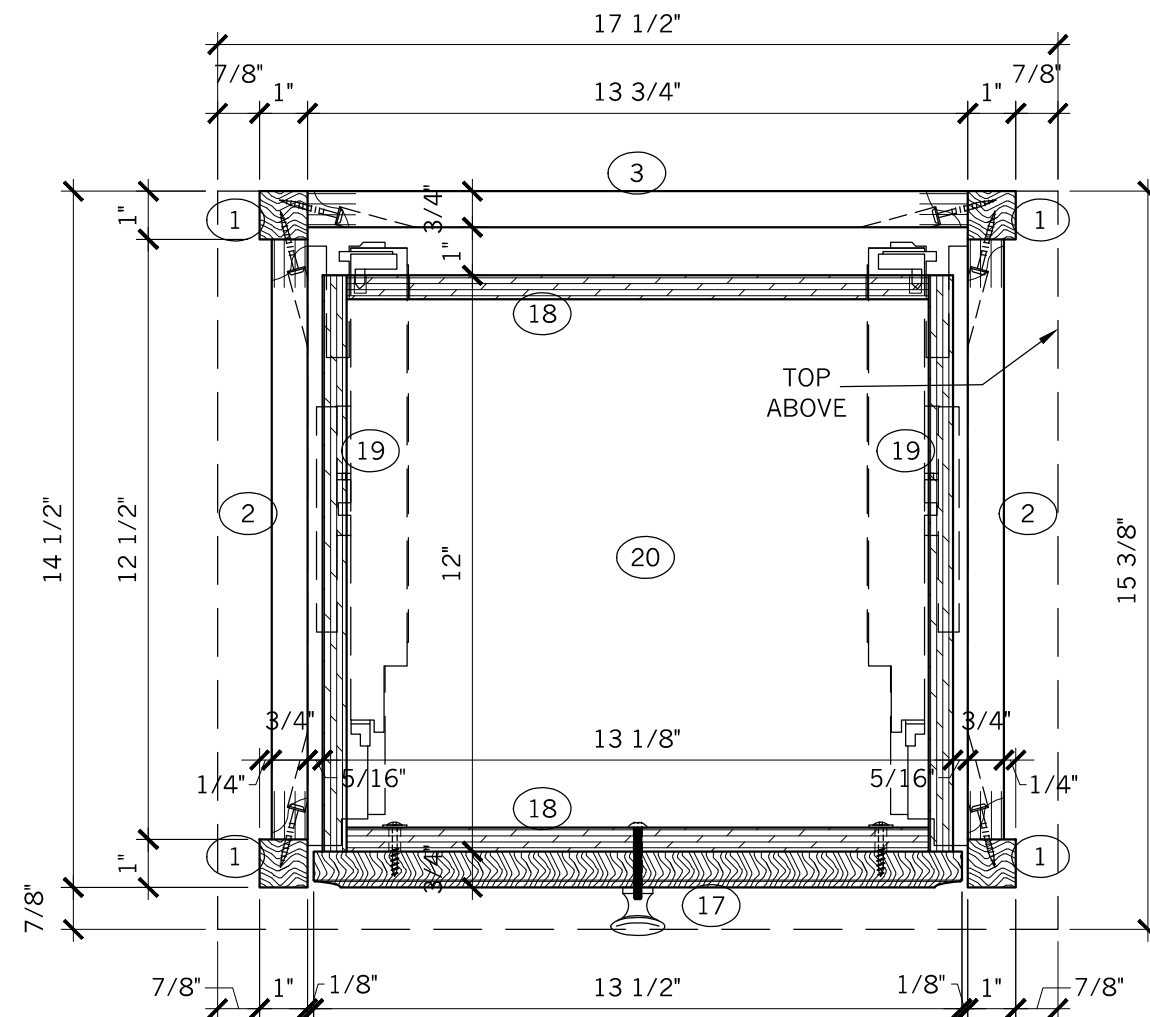
SkillsUSA

CALIFORNIA STATE CONTEST

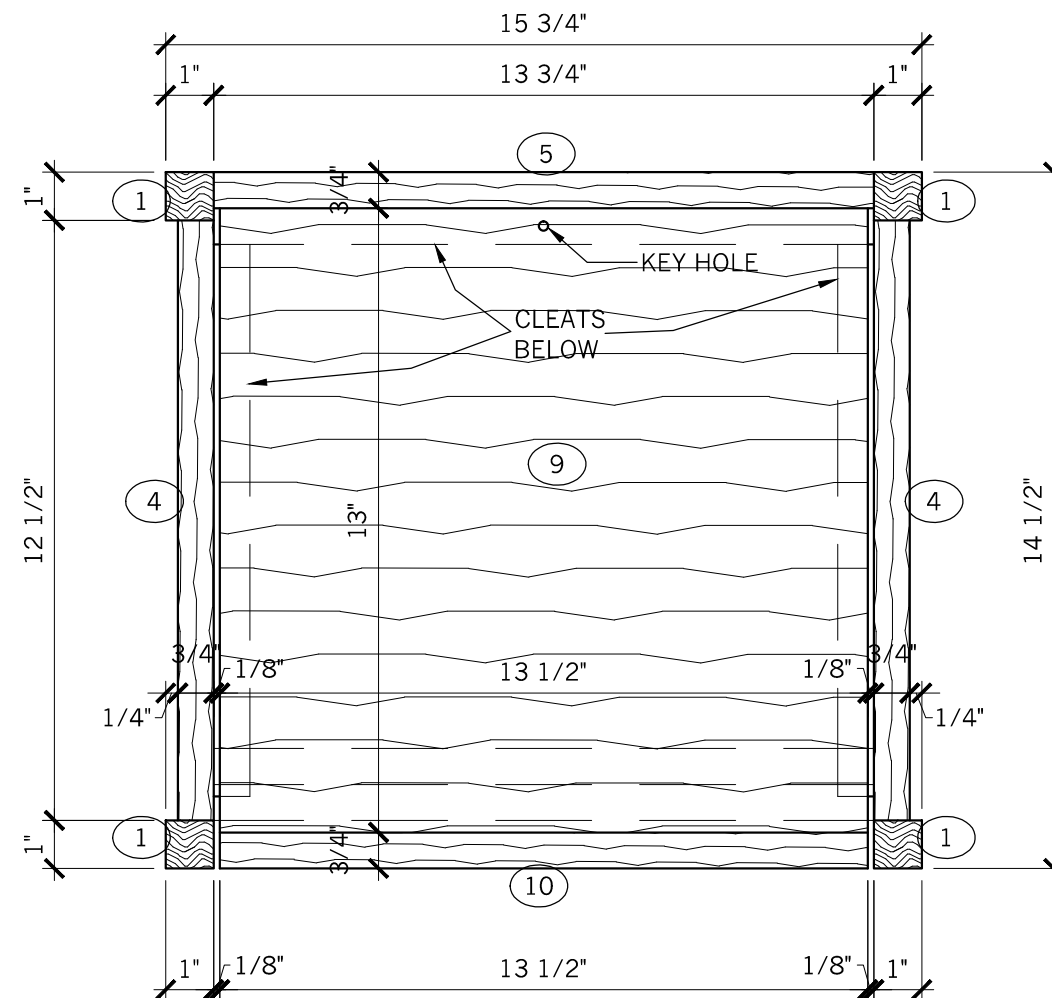
ITEM: WOOD END TABLE	
DATE: APRIL	COMPETITION DATE: 2023
SCALE: 3" = 1'-0"	DWG #: 1A
DRAWN BY: ES	

SPECIAL SPONSORS:



C PLAN SECTION
SCALE: 3"=1'-0"



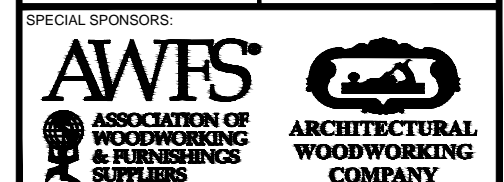
D PLAN SECTION
SCALE: 3"=1'-0"

CONTESTANT #

SkillsUSA

CALIFORNIA STATE CONTEST

ITEM: WOOD END TABLE	
DATE: APRIL	COMPETITION DATE: 2023
SCALE: 3" = 1'-0"	DWG #: 1B
DRAWN BY: ES	



1/4" Ø THRU HOLES (4)

BACK

FRONT

19

18

20

19

18

4 1/2"

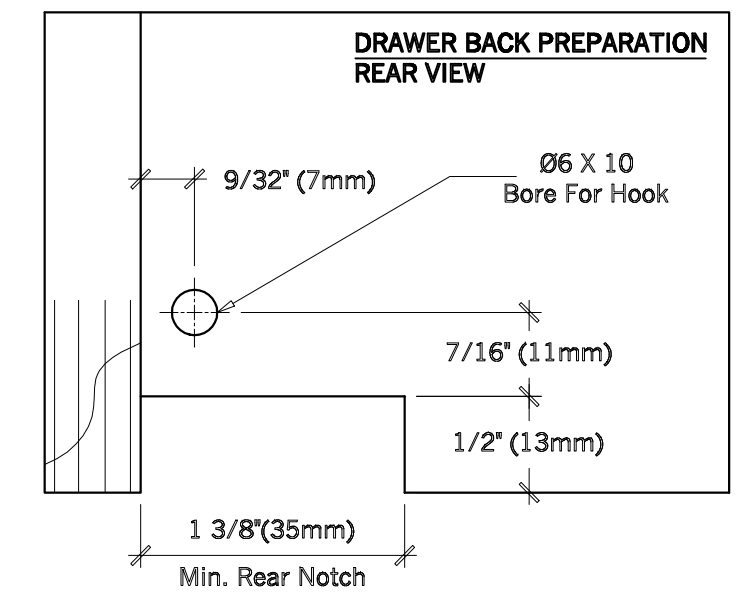
12"

13 1/8"

Drawer Box Kit
Will be a Kit from
Drawer Box Specialties

ISOMETRIC VIEW

SCALE: NTS



2 DETAIL
SCALE: F.S.



CONTESTANT #

SkillsUSA CALIFORNIA STATE CONTEST	
ITEM: WOOD END TABLE DWR BOX	
DATE: APRIL	2023
SCALE: AS NOTED	DWG #: 1D
DRAWN BY: ES	
SPECIAL SPONSORS:  	

INFORMATION ONLY

BILL OF MATERIALS

NOTES:

#		QTY	DESCRIPTION	MATERIAL	THICKNESS	WIDTH	LENGTH	NOTES
1			Legs	Solid Red Oak	1"	1"		
2			Top Side Rails	Red Oak Ply	$\frac{3}{4}$ "		$12\frac{1}{2}$ "	Edge 1 Long
3		1	Top Rear Rail	Red Oak Ply	$\frac{3}{4}$ "	$6\frac{5}{8}$ "		Edge 1 Long
4			Bottom Side Rails	Red Oak Ply	$\frac{3}{4}$ "			Edge 1 Long
5		1	Bottom Rear Rail	Red Oak Ply	$\frac{3}{4}$ "	6"	$13\frac{3}{4}$ "	Edge 1 Long
6			Stretchers	Red Oak Ply	$\frac{3}{4}$ "	5"		
7		1	Deck	Red Oak Ply	$\frac{3}{4}$ "		$13\frac{3}{4}$ "	Edge 1 Long
8		1	Apron	Red Oak Ply	$\frac{3}{4}$ "	$2\frac{1}{2}$ "	$13\frac{3}{4}$ "	Edge 1 Long
9		1	False Bottom	Red Oak Ply	$\frac{3}{4}$ "		$13\frac{1}{2}$ "	Edge 2 Short
10		1	False Front	Red Oak Ply	$\frac{3}{4}$ "			Edge 2 Short, 1 Long
11		1	Lock Rail	Solid Poplar	$\frac{3}{4}$ "	$1\frac{9}{16}$ "	$13\frac{1}{2}$ "	Miter 1 Long (Already Cut)
12		2	Side Cleats	Solid Poplar	$\frac{3}{4}$ "	$\frac{3}{4}$ "	$11\frac{1}{2}$ "	Miter 1 End
13		1	Rear Cleat	Solid Poplar	$\frac{3}{4}$ "	$\frac{3}{4}$ "	$13\frac{3}{4}$ "	
14			Top	Red Oak Ply	$\frac{3}{4}$ "			
15		1	Front Edge Build-up	Solid Red Oak	$\frac{3}{4}$ "	2"		Miter 2 Ends
16			Side Edge Build-ups	Solid Red Oak	$\frac{3}{4}$ "	2"		Miter 1 End
17		1	Drawer Front	Solid Red Oak	$\frac{3}{4}$ "			From Decore-Ative Specialties
18		2	Drawer F&B	Baltic Birch Ply	$\frac{1}{2}$ "	$4\frac{1}{2}$ "	$13\frac{1}{8}$ "	Kit from Drawer Box Specialties
19		2	Drawer Sides	Baltic Birch Ply	$\frac{1}{2}$ "	$4\frac{7}{16}$ "	$11\frac{11}{16}$ "	Kit from Drawer Box Specialties
20		1	Drawer Bottom	Baltic Birch Ply	$\frac{1}{4}$ "	$12\frac{5}{8}$ "	$11\frac{1}{2}$ "	Kit from Drawer Box Specialties

FILL IN OPEN CELLS (5 POINTS EACH)
This portion of the competition is worth 110 of 1000 points.

KEEP FOR CONTEST

CONTESTANT #

SkillsUSA

CALIFORNIA

STATE CONTEST

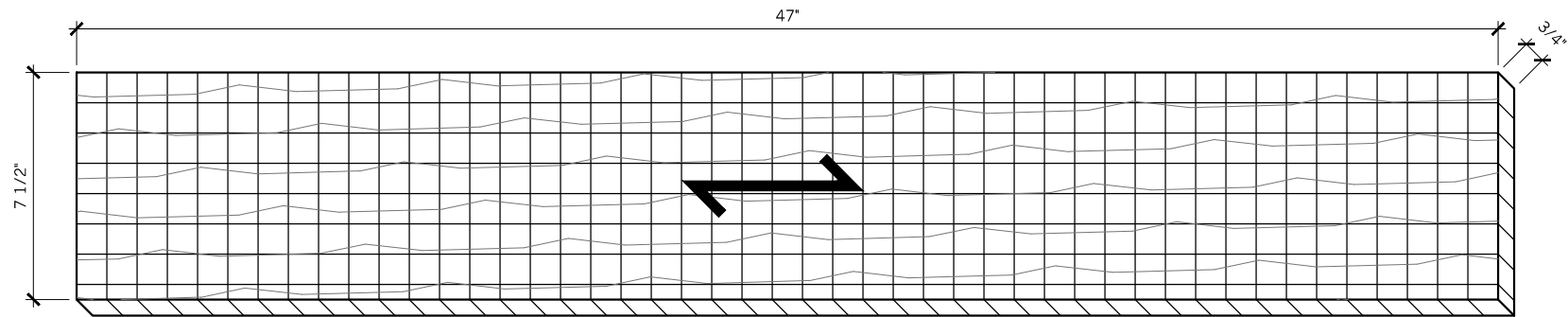
ITEM: WOOD END TABLE	
DATE: APRIL	COMPETITION DATE: 2023
SCALE: N/A	DWG #: BOM
DRAWN BY: ES	

SPECIAL SPONSORS:

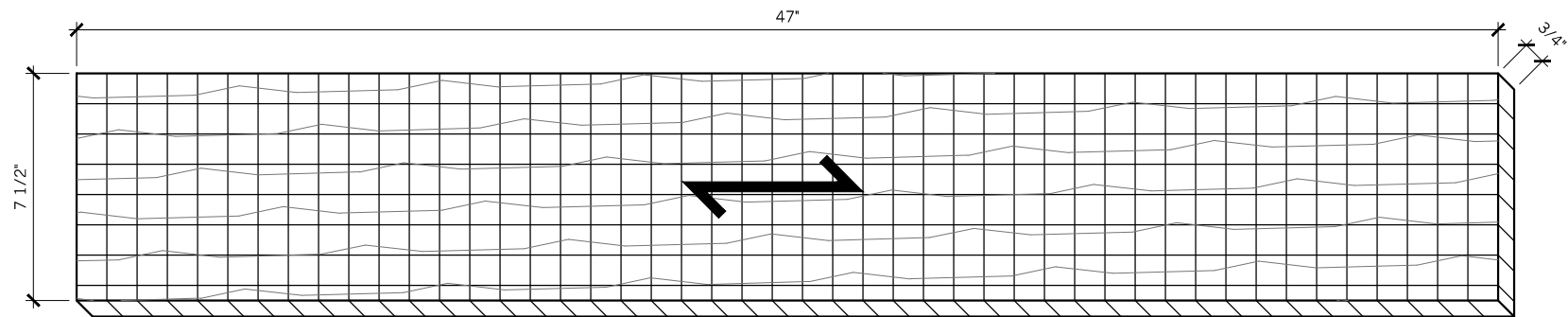
AWFS

ASSOCIATION OF WOODWORKING & FURNISHINGS SUPPLIERS

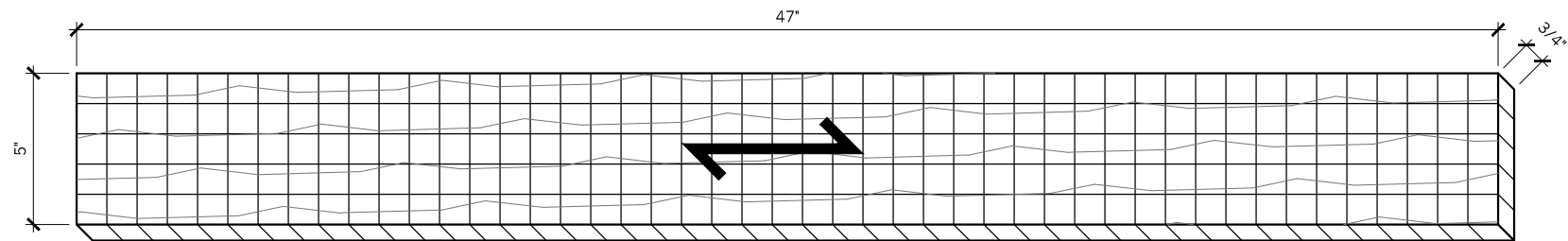
ARCHITECTURAL WOODWORKING COMPANY



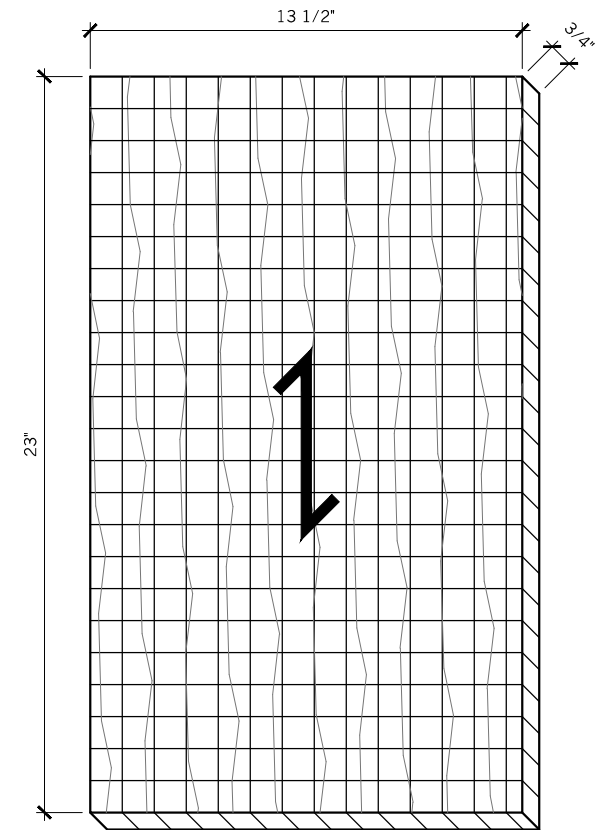
-FOR THE TOP RAILS (PARTS # 2 & 3) YOU WILL RECEIVE ONE PIECE OF SHEET STOCK, 1 PC. @ $\frac{3}{4}$ " x $7\frac{1}{2}$ " x 47" - RWRL



-FOR THE BOTTOM RAILS (PARTS # 4 & 5) YOU WILL RECEIVE ONE PIECE OF SHEET STOCK, 1 PC. @ $\frac{3}{4}$ " x $7\frac{1}{2}$ " x 47" - RWRL



-FOR THE STRETCHERS & APRON (PARTS # 6 & 8) YOU WILL RECEIVE ONE PIECE OF SHEET STOCK, 1 PC. @ $\frac{3}{4}$ " x 5" x 47" - RL



-FOR THE FALSE BOTTOM & FALSE FRONT (PARTS # 9 & 10)
YOU WILL RECEIVE ONE PIECE OF SHEET STOCK, 1 PC. @ $\frac{3}{4}$ " x $13\frac{1}{2}$ " x 23" - RL

INFORMATION ONLY

CONTESTANT #

MATERIAL LAYOUT INSTRUCTIONS

Once you've completed your Bill of Materials, lay out the parts on each corresponding piece of material. Do this by drawing a line vertically and/or horizontally to indicate saw cut. Label each piece with the part name and overall dimensions. Draw an "X" on any scrap pieces. Pay close attention to the grain direction of each piece.

This portion of the competition is worth 40 of 1000 points.

Note: Each square is scaled to 1" Squared.

KEEP FOR CONTEST

SkillsUSA
CALIFORNIA
STATE CONTEST

ITEM: WOOD END TABLE	
DATE: APRIL	COMPETITION DATE: 2023
SCALE: 1-1/2"=1'-0"	DWG #:
DRAWN BY: ES	Layout

